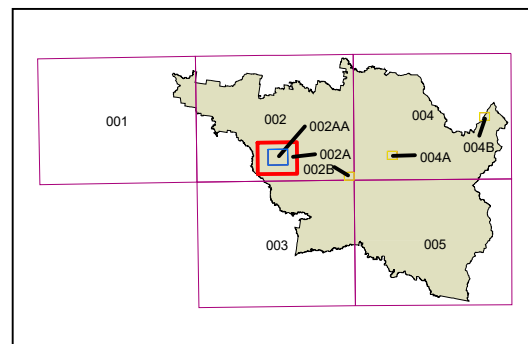


Zone

| | |
|------------|------------------------------------|
| B2 | Local Centre |
| B3 | Commercial Core |
| B4 | Mixed Use |
| B5 | Business Development |
| B7 | Business Park |
| E1 | National Parks and Nature Reserves |
| E3 | Environmental Management |
| E4 | Environmental Living |
| IN1 | General Industrial |
| IN2 | Light Industrial |
| R1 | General Residential |
| R2 | Low Density Residential |
| R5 | Large Lot Residential |
| RE1 | Public Recreation |
| RE2 | Private Recreation |
| RU1 | Primary Production |
| RU3 | Forestry |
| RU4 | Primary Production Small Lots |
| RU5 | Village |
| SP2 | Infrastructure |

Cadastre 30/11/2020 © Spatial Services



Projection: GDA 1994
MGA Zone 56

Scale: 1:40,000 @ A3

Map identification number: 0111 COM LZN 002A 040 20201130

