



# Bathurst Regional Local Environmental Plan 2014

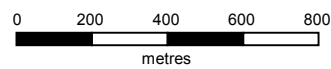
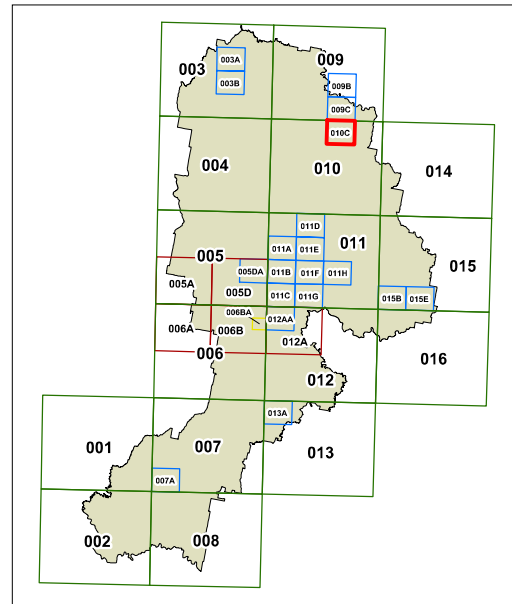
## Land Zoning Map - Sheet LZN\_010C

### Zone

- B1 Neighbourhood Centre
- B3 Commercial Core
- B5 Business Development
- E1 National Parks and Nature Reserves
- E2 Environmental Conservation
- E4 Environmental Living
- IN1 General Industrial
- R1 General Residential
- R2 Low Density Residential
- R5 Large Lot Residential
- RE1 Public Recreation
- RE2 Private Recreation
- RU1 Primary Production
- RU2 Rural Landscape
- RU3 Forestry
- RU4 Primary Production Small Lots
- RU5 Village
- SP1 Special Activities
- SP2 Infrastructure
- SP3 Tourist
- W2 Recreational Waterways

### Cadastre

Base data 23/04/1997 © Land and Property Information (LPI)  
Addendum data 16/07/2013 © Bathurst Regional Council



Scale: 1:20,000 @ A3

Projection: GDA 1994  
MGA Zone 55

Map identification number:

0470\_COM\_LZN\_010C\_020\_20140321

