

Bega Valley Local Environmental Plan 2013

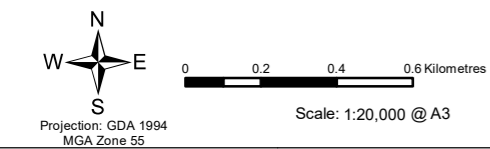
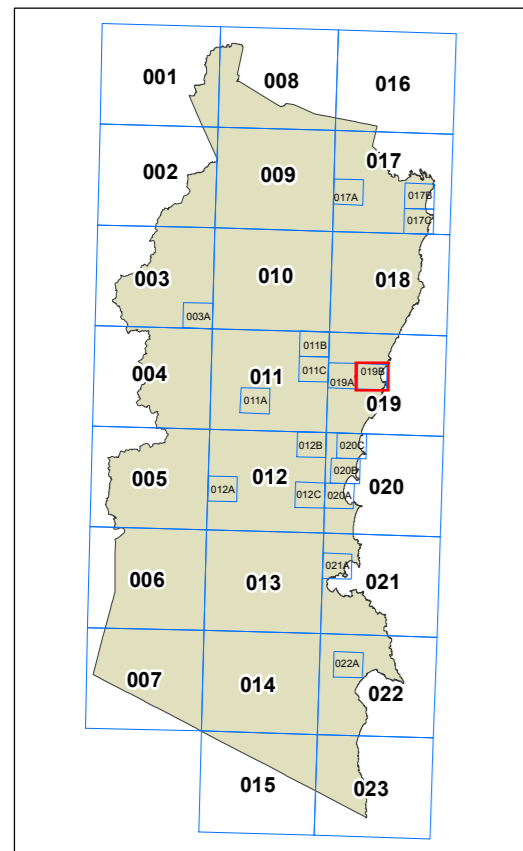
Land Zoning Map Sheet LZN_019B

Zone

- | | |
|----------------------------------------------|------------------------------------------|
| B1 Neighbourhood Centre | RE1 Public Recreation |
| B2 Local Centre | RE2 Private Recreation |
| B4 Mixed Use | RU1 Primary Production |
| B5 Business Development | RU2 Rural Landscape |
| E1 National Parks and Nature Reserves | RU3 Forestry |
| E2 Environmental Conservation | RU4 Primary Production Small Lots |
| E3 Environmental Management | RU5 Village |
| E4 Environmental Living | SP1 Special Activities |
| IN1 General Industrial | SP2 Infrastructure |
| IN2 Light Industrial | SP3 Tourist |
| IN4 Working Waterfront | W1 Natural Waterways |
| R2 Low Density Residential | W2 Recreational Waterways |
| R3 Medium Density Residential | W3 Working Waterways |
| R5 Large Lot Residential | UL Unzoned Land |
| | DM Deferred Matter |

Cadastre

Cadastre 03/02/2021
© Spatial Services



Map identification number:
0550_COM_LZN_019B_020_20210414

