

# Bega Valley Local Environmental Plan 2013

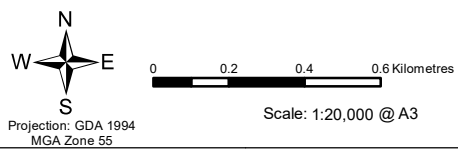
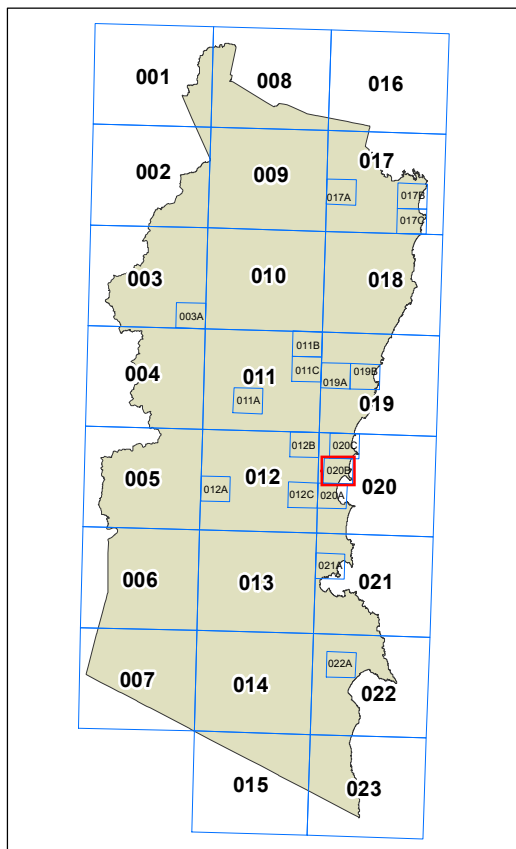
## Land Zoning Map Sheet LZN\_020B

### Zone

- |  |  |
|--|--|
| <b>B1</b> Neighbourhood Centre               | <b>RE1</b> Public Recreation             |
| <b>B2</b> Local Centre                       | <b>RE2</b> Private Recreation            |
| <b>B4</b> Mixed Use                          | <b>RU1</b> Primary Production            |
| <b>B5</b> Business Development               | <b>RU2</b> Rural Landscape               |
| <b>E1</b> National Parks and Nature Reserves | <b>RU3</b> Forestry                      |
| <b>E2</b> Environmental Conservation         | <b>RU4</b> Primary Production Small Lots |
| <b>E3</b> Environmental Management           | <b>RU5</b> Village                       |
| <b>E4</b> Environmental Living               | <b>SP1</b> Special Activities            |
| <b>IN1</b> General Industrial                | <b>SP2</b> Infrastructure                |
| <b>IN2</b> Light Industrial                  | <b>SP3</b> Tourist                       |
| <b>IN4</b> Working Waterfront                | <b>W1</b> Natural Waterways              |
| <b>R2</b> Low Density Residential            | <b>W2</b> Recreational Waterways         |
| <b>R3</b> Medium Density Residential         | <b>W3</b> Working Waterways              |
| <b>R5</b> Large Lot Residential              | <b>UL</b> Unzoned Land                   |
|  | <b>DM</b> Deferred Matter                |

### Cadastre

□ Cadastre 03/02/2021  
© Spatial Services



Map identification number:  
0550\_COM\_LZN\_020B\_020\_20210414

