



# Bellingden Local Environmental Plan 2010

## Acid Sulfate Soils Map Mineral Resource Area Map

Sheet CL1\_004

### Acid Sulfate Soils

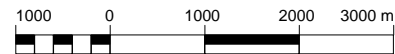
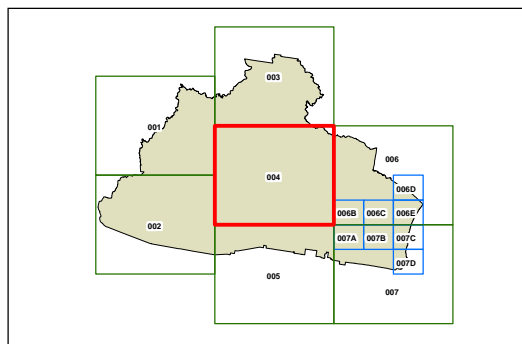
- Class 1
- Class 2
- Class 3
- Class 4
- Class 5

### Mineral Resource Areas

- Identified resource
- Buffer zone

### Cadastre

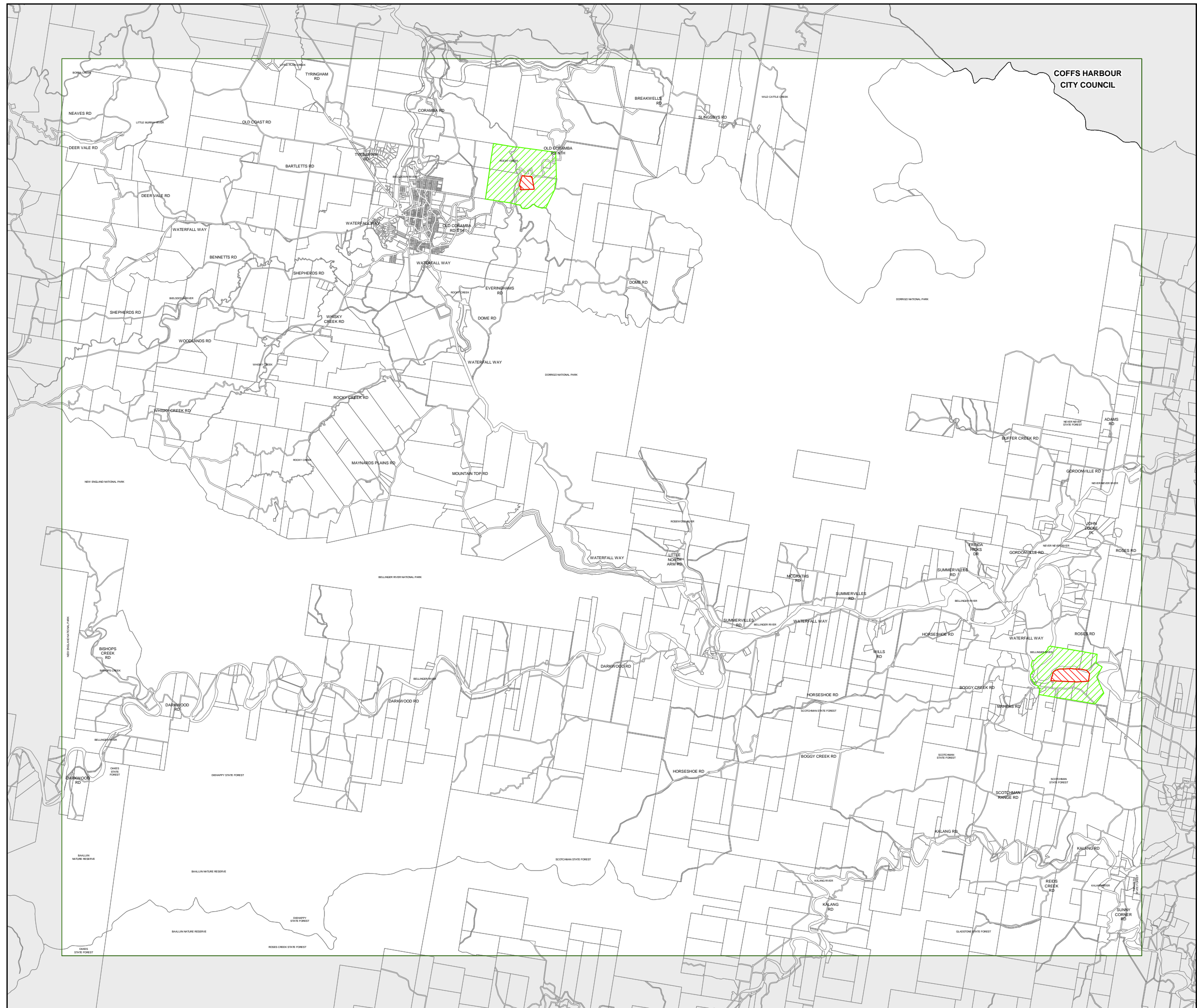
Base data  
24/2/2009 © Land and Property Information (LPI)  
Addendum data  
29/2/2012 © Bellingden Shire Council



Scale: 1:80,000 @ A3

Projection: GDA 1994  
MGA Zone 56

Map identification number:  
0600\_COM\_CL1\_004\_080\_20130315



COFFS HARBOUR  
CITY COUNCIL