



**Bellingen Local
Environmental Plan
2010**

**Acid Sulfate Soils Map
Mineral Resource Area Map**

Sheet CL1_006C

Acid Sulfate Soils

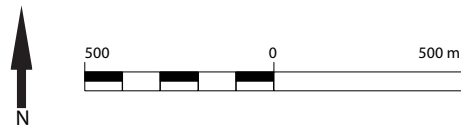
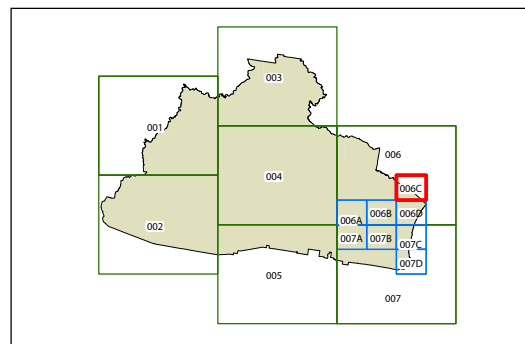
- Class 1
- Class 2
- Class 3
- Class 4
- Class 5

Mineral Resource Areas

- Identified resource
- Buffer zone

Cadastre

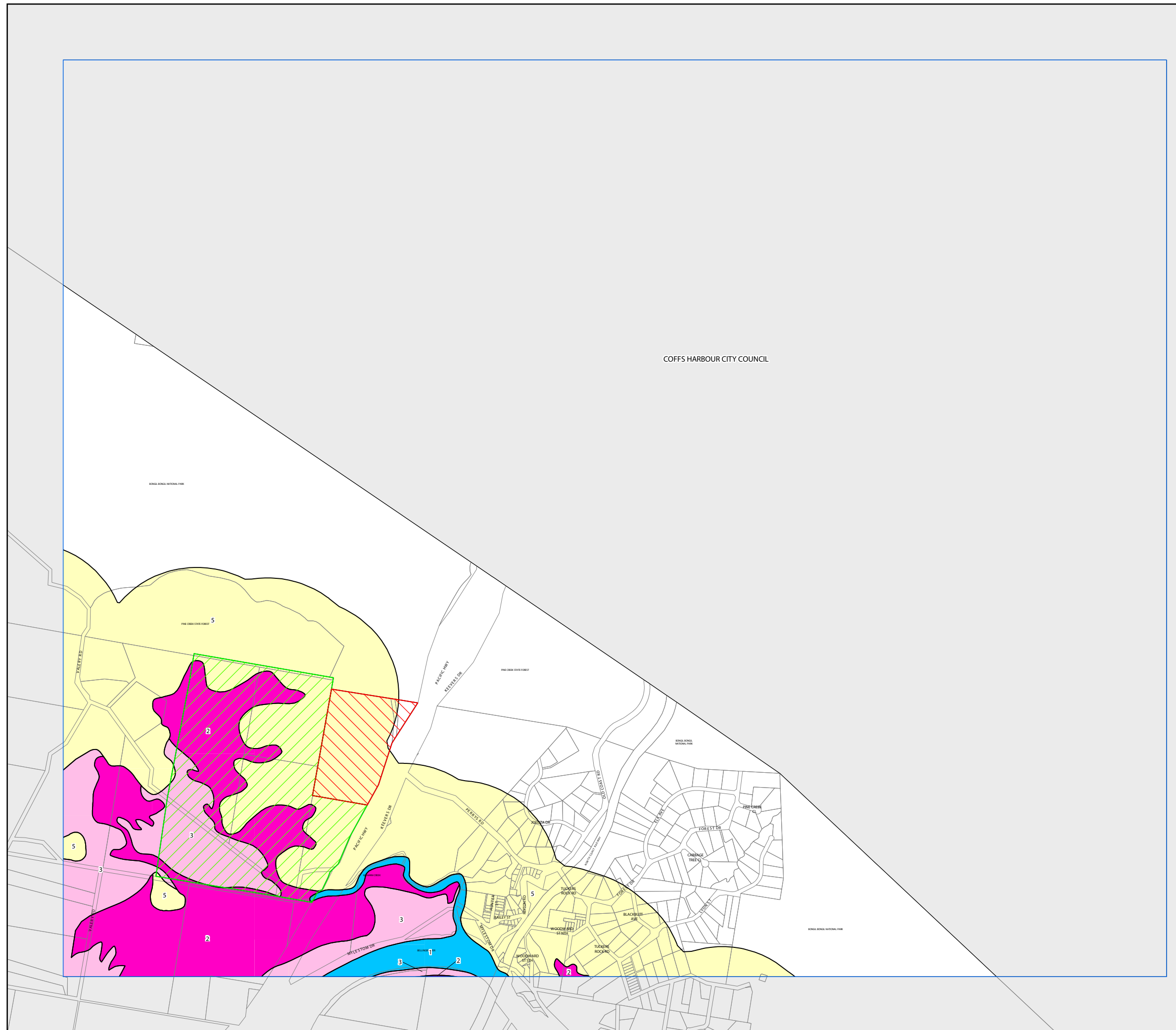
- Cadastre 23/3/2010 © LPMA & Bellingen Shire Council



Scale: 1:20,000 @ A3

Projection: GDA 1994
MGA Zone 56

Map identification number:
0600_COM_CL1_006C_020_20100622



COFFS HARBOUR CITY COUNCIL