



Bellingen Local Environmental Plan 2010

Acid Sulfate Soils Map Mineral Resource Area Map

Sheet CL1_006D

Acid Sulfate Soils

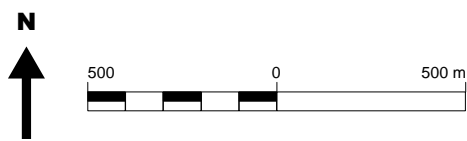
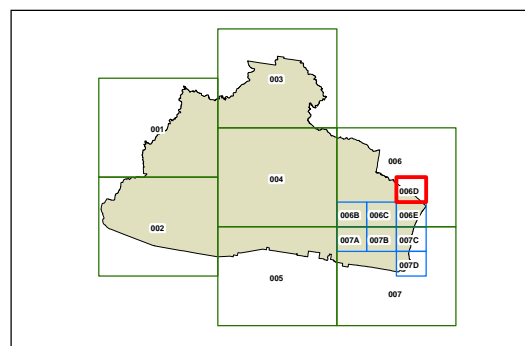
- Class 1
- Class 2
- Class 3
- Class 4
- Class 5

Mineral Resource Areas

- Identified resource
- Buffer zone

Cadastre

- Base data
24/2/2009 © Land and Property Information (LPI)
- Addendum data
29/2/2012 © Bellingen Shire Council



Scale: 1:20,000 @ A3

Projection: GDA 1994
MGA Zone 56

Map identification number:
0600_COM_CL1_006D_020_20130315

