



**Bellingen Local
Environmental Plan
2010**

**Acid Sulfate Soils Map
Mineral Resource Area Map**

Sheet CL1_006E

Acid Sulfate Soils

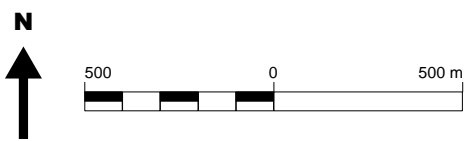
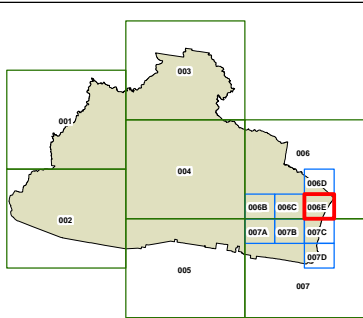
- Class 1
- Class 2
- Class 3
- Class 4
- Class 5

Mineral Resource Areas

- Identified resource
- Buffer zone

Cadastre

Base data
24/2/2009 © Land and Property Information (LPI)
Addendum data
29/2/2012 © Bellingen Shire Council



Projection: GDA 1994
MGA Zone 56

Map identification number:
0600_COM_CL1_006E_020_20130315

