



Belling Local Environmental Plan 2010

Acid Sulfate Soils Map Mineral Resource Area Map

Sheet CL1_007

Acid Sulfate Soils

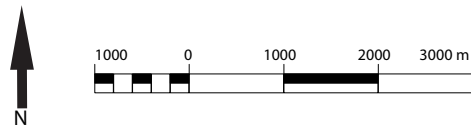
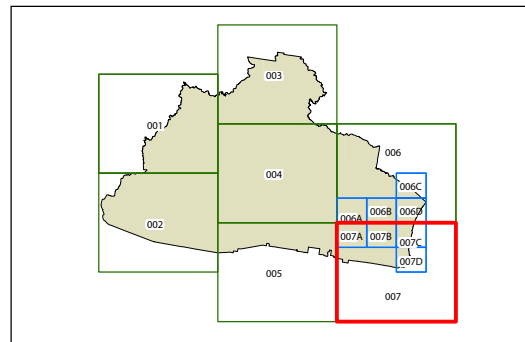
- Class 1
- Class 2
- Class 3
- Class 4
- Class 5

Mineral Resource Areas

- Identified resource
- Buffer zone

Cadastre

- Cadastre 23/3/2010 © LPMA & Belling Shire Council



Scale: 1:80,000 @ A3

Projection: GDA 1994
MGA Zone 56

Map identification number:
0600_COM_CL1_007_080_20100622

