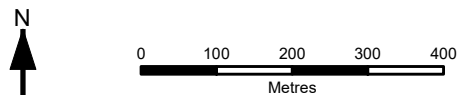
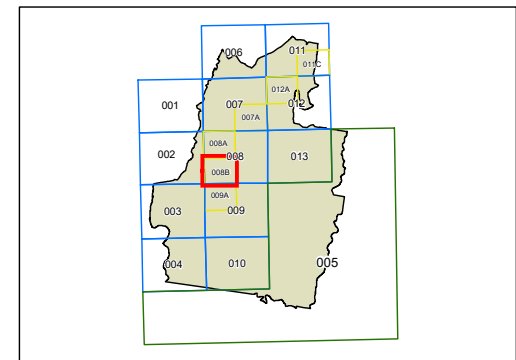


**Land Zoning Map - Sheet LZN\_008B**

- Zone**
- B1 Neighbourhood Centre
  - B2 Local Centre
  - B3 Commercial Core
  - B4 Mixed Use
  - B5 Business Development
  - B7 Business Park
  - E1 National Parks and Nature Reserves
  - E2 Environmental Conservation
  - E3 Environmental Management
  - E4 Environmental Living
  - IN1 General Industrial
  - IN2 Light Industrial
  - R2 Low Density Residential
  - R3 Medium Density Residential
  - R4 High Density Residential
  - R5 Large Lot Residential
  - RE1 Public Recreation
  - RE2 Private Recreation
  - RU2 Rural Landscape
  - RU5 Village
  - RU6 Transition
  - SP1 Special Activities
  - SP2 Infrastructure
  - W1 Natural Waterways
  - DM Deferred Matter
  - SEDP SEPP (State Significant Precincts) 2005 Edmondson Park South
  - SWGC South West Growth Centre
  - MIC SEPP (Major Infrastructure Corridors) 2020

**Cadastre**  
 Cadastre 10/02/2020 © Spatial Services



Projection: GDA 1994  
 MGA Zone 56  
 Scale: 1:10,000 @ A3

Map Identification Number: 1500\_COM\_LZN\_008B\_010\_20200210

