



Campbelltown Local Environmental Plan 2015

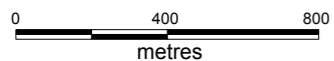
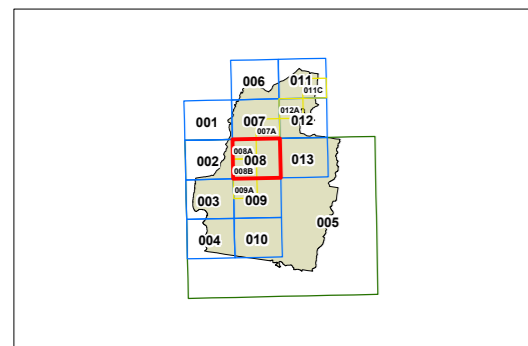
Land Zoning Map - Sheet LZN_008

Zone

- B1 Neighbourhood Centre
- B2 Local Centre
- B3 Commercial Core
- B4 Mixed Use
- B5 Business Development
- B7 Business Park
- E1 National Parks and Nature Reserves
- E2 Environmental Conservation
- E3 Environmental Management
- E4 Environmental Living
- IN1 General Industrial
- IN2 Light Industrial
- R2 Low Density Residential
- R3 Medium Density Residential
- R4 High Density Residential
- R5 Large Lot Residential
- RE1 Public Recreation
- RE2 Private Recreation
- RU2 Rural Landscape
- RU5 Village
- RU6 Transition
- SP1 Special Activities
- SP2 Infrastructure
- W1 Natural Waterways
- DM Deferred Matter
- SEDP SEPP (State Significant Precincts) 2005 Edmondson Park South
- SWGC South West Growth Centre

Cadastre

Cadastre 23/02/2018 © Spatial Services NSW

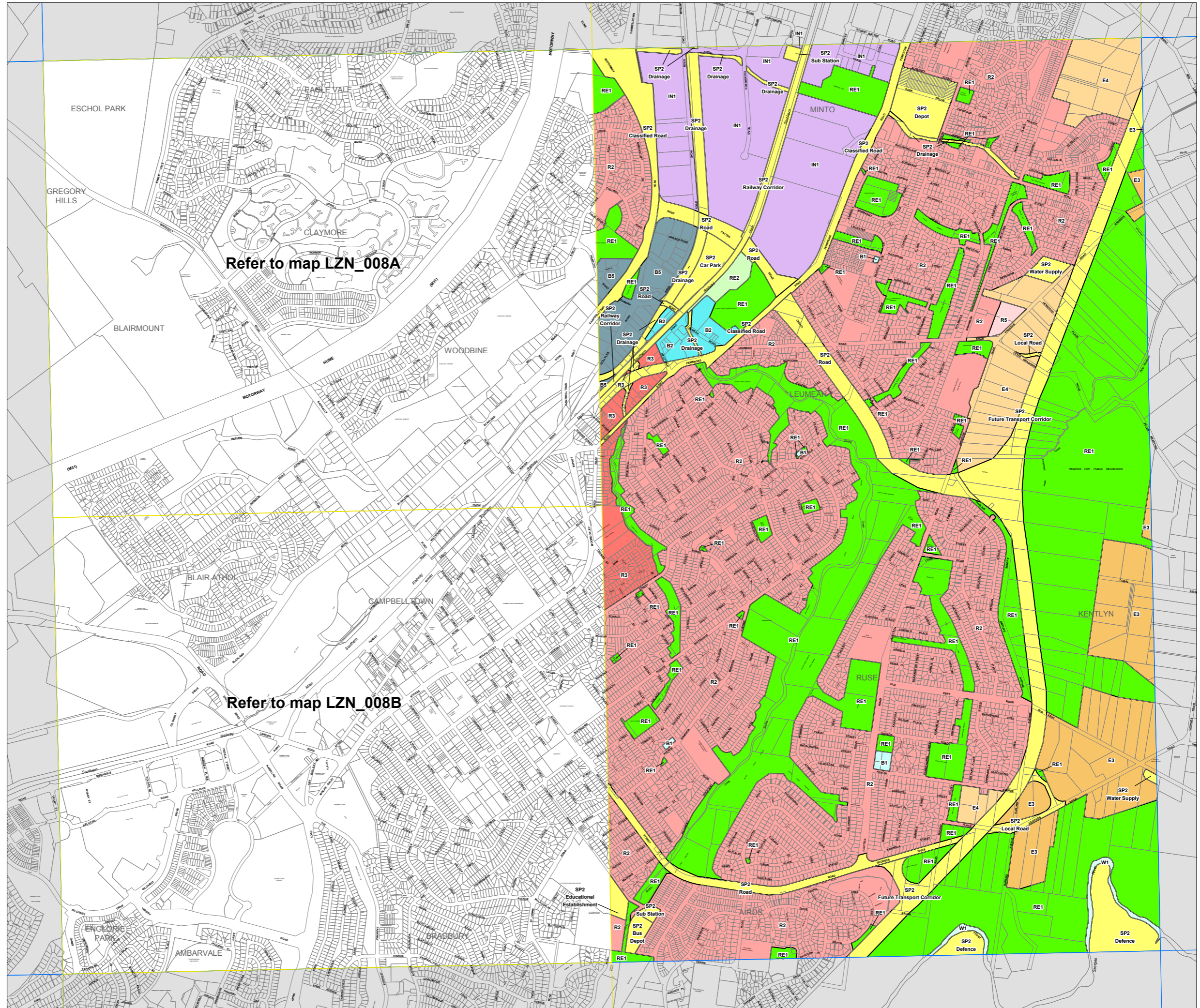


Scale: 1:20,000 @ A3

Projection: GDA 1994
MGA Zone 56

Map identification number:

1500_COM_LZN_008_020_20180223



Refer to map LZN_008A

Refer to map LZN_008B