



Cessnock Local Environmental Plan 2011

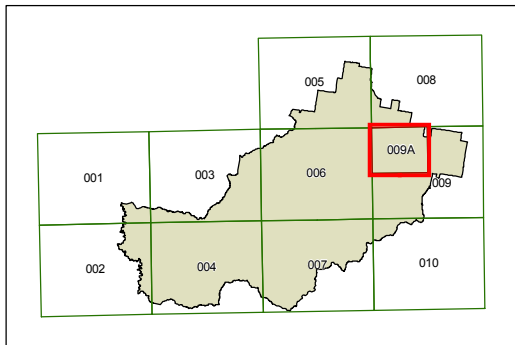
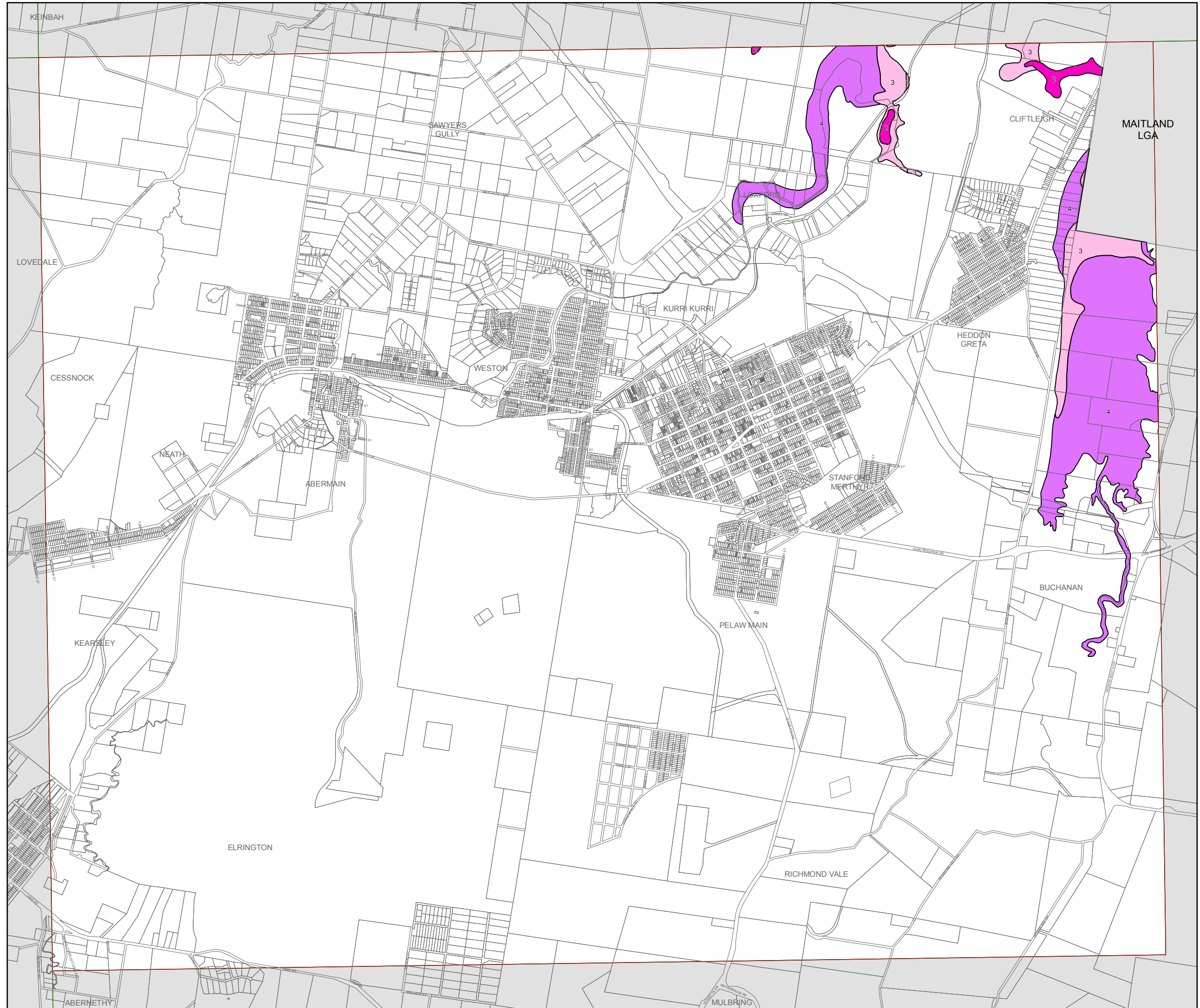
Acid Sulfate Soils Map - Sheet ASS_009A

Acid Sulfate Soils

- Class 2
- Class 3
- Class 4

Cadastre

Cadastre 20/11/2011 © Land and Property Information (LPI)



0 400 800 1,600 Metres

Scale: 1: 40,000 @ A3

Projection: GDA 1994
MGA Zone 56

Map identification number: 1720_COM_ASS_009A_040_20111124