

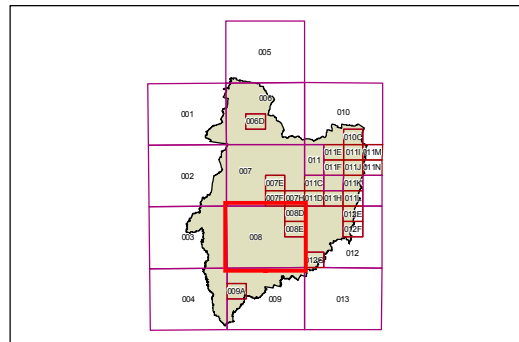
Land Zoning Map - Sheet LZN_008

ZONE

- B1 Neighbourhood Centre
- B2 Local Centre
- B3 Commercial Core
- B5 Business Development
- E1 National Parks and Nature Reserves
- E2 Environmental Conservation
- E3 Environmental Management
- IN1 General Industrial
- IN4 Working Waterfront
- R1 General Residential
- R2 Low Density Residential
- R3 Medium Density Residential
- R5 Large Lot Residential
- RE1 Public Recreation
- RE2 Private Recreation
- RU1 Primary Production
- RU2 Rural Landscape
- RU3 Forestry
- SP1 Special Activities
- SP2 Infrastructure
- SP3 Tourist
- W1 Natural Waterways
- W2 Recreational Waterways
- W3 Working Waterways

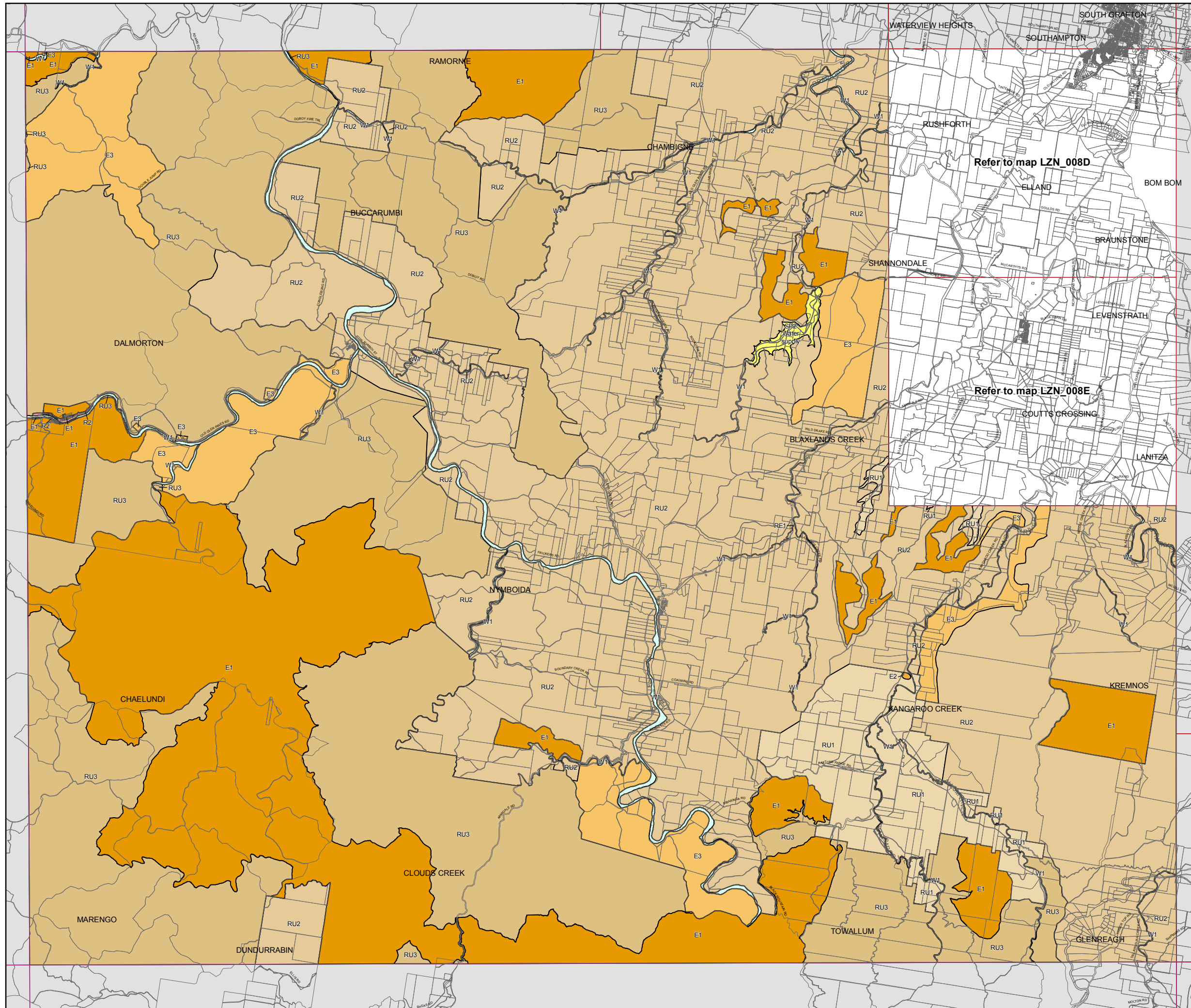
Cadastre

Cadastre 27/04/2011 © NSW LPMA



Projection: GDA 1994
MGA Zone 56

Map identification number:
1730_COM_LZN_008_160_20111206



Refer to map LZN_008D

Refer to map LZN_008E