



# Coffs Harbour City Centre Local Environmental Plan 2011

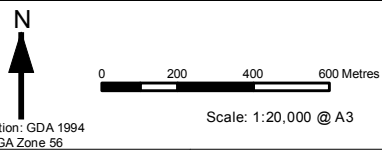
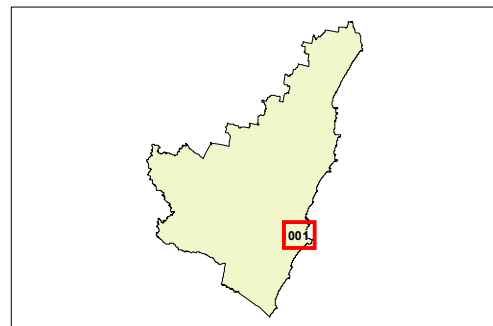
## Land Zoning Map - Sheet LZN\_001

### Zone

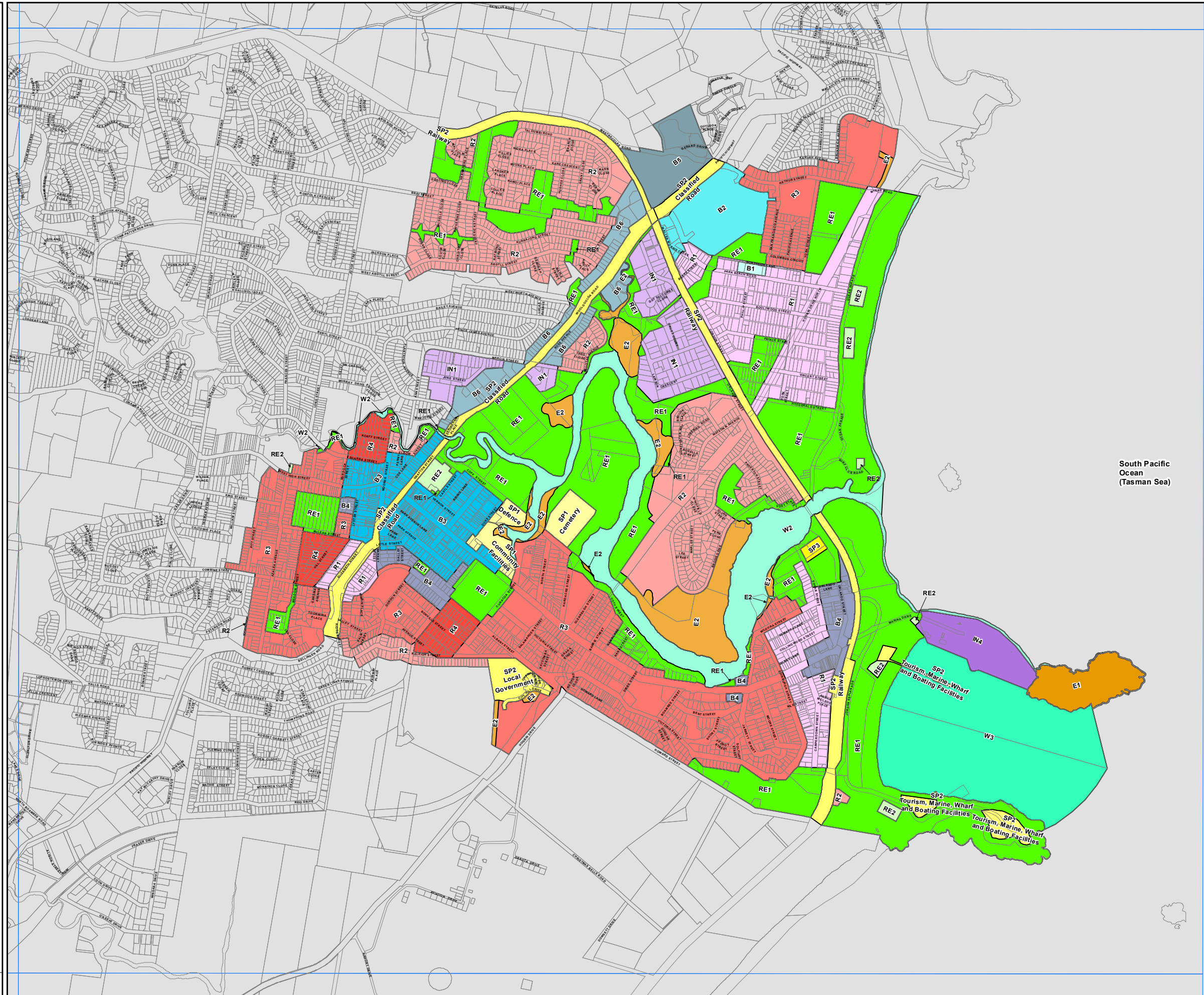
- B1 Neighbourhood Centre
- B2 Local Centre
- B3 Commercial Core
- B4 Mixed Use
- B5 Business Development
- B6 Enterprise Corridor
- E1 National Parks and Nature Reserves
- E2 Environmental Conservation
- IN1 General Industrial
- IN4 Working Waterfront
- R1 General Residential
- R2 Low Density Residential
- R3 Medium Density Residential
- R4 High Density Residential
- RE1 Public Recreation
- RE2 Private Recreation
- SP1 Special Activities
- SP2 Infrastructure
- SP3 Tourist
- W2 Recreational Waterways
- W3 Working Waterways

### Cadastre

- Base Data 1990 © NSW LPMA
- Addendum Data 13/05/2011
- © Coffs Harbour City Council



Map identification number: 1800\_CEN\_LZN\_001\_020\_20110513



South Pacific Ocean (Tasman Sea)