



# Corowa Local Environmental Plan 2012

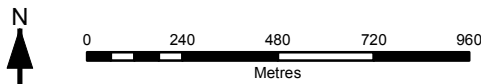
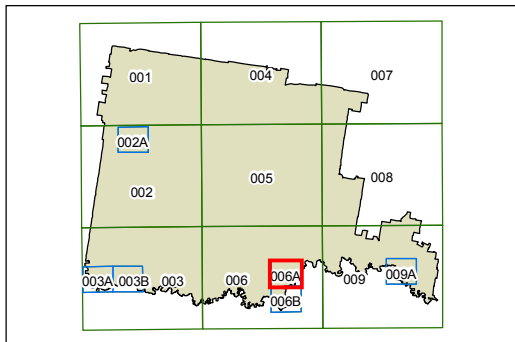
## Land Zoning Map - Sheet LZN\_006A

### Zone

- B1 Neighbourhood Centre
- B2 Local Centre
- B6 Enterprise Corridor
- E1 National Parks and Nature Reserves
- E3 Environmental Management
- IN1 General Industrial
- R1 General Residential
- R2 Low Density Residential
- R5 Large Lot Residential
- RE1 Public Recreation
- RE2 Private Recreation
- RU1 Primary Production
- RU3 Forestry
- RU5 Village
- SP1 Special Activities
- SP2 Infrastructure
- W1 Natural Waterways
- W2 Recreational Waterways

### Cadastre

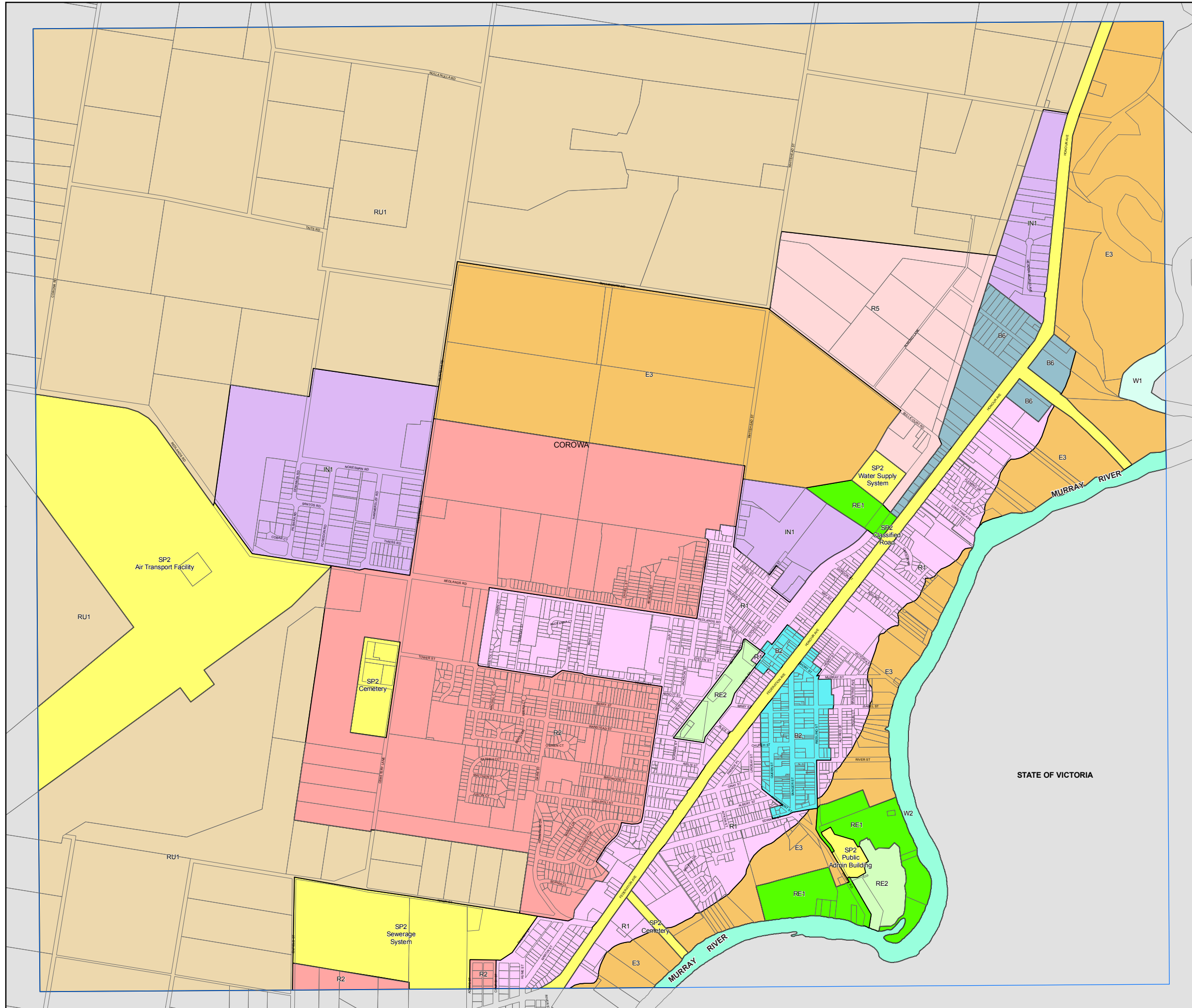
Cadastre 12/11/2010 © NSW LPMA



Projection: GDA 1994  
MGA Zone 55

Scale: 1:20,000 @ A3

Map identification number:  
2300\_COM\_LZN\_006A\_020\_20120509



STATE OF VICTORIA