



# Corowa Local Environmental Plan 2012

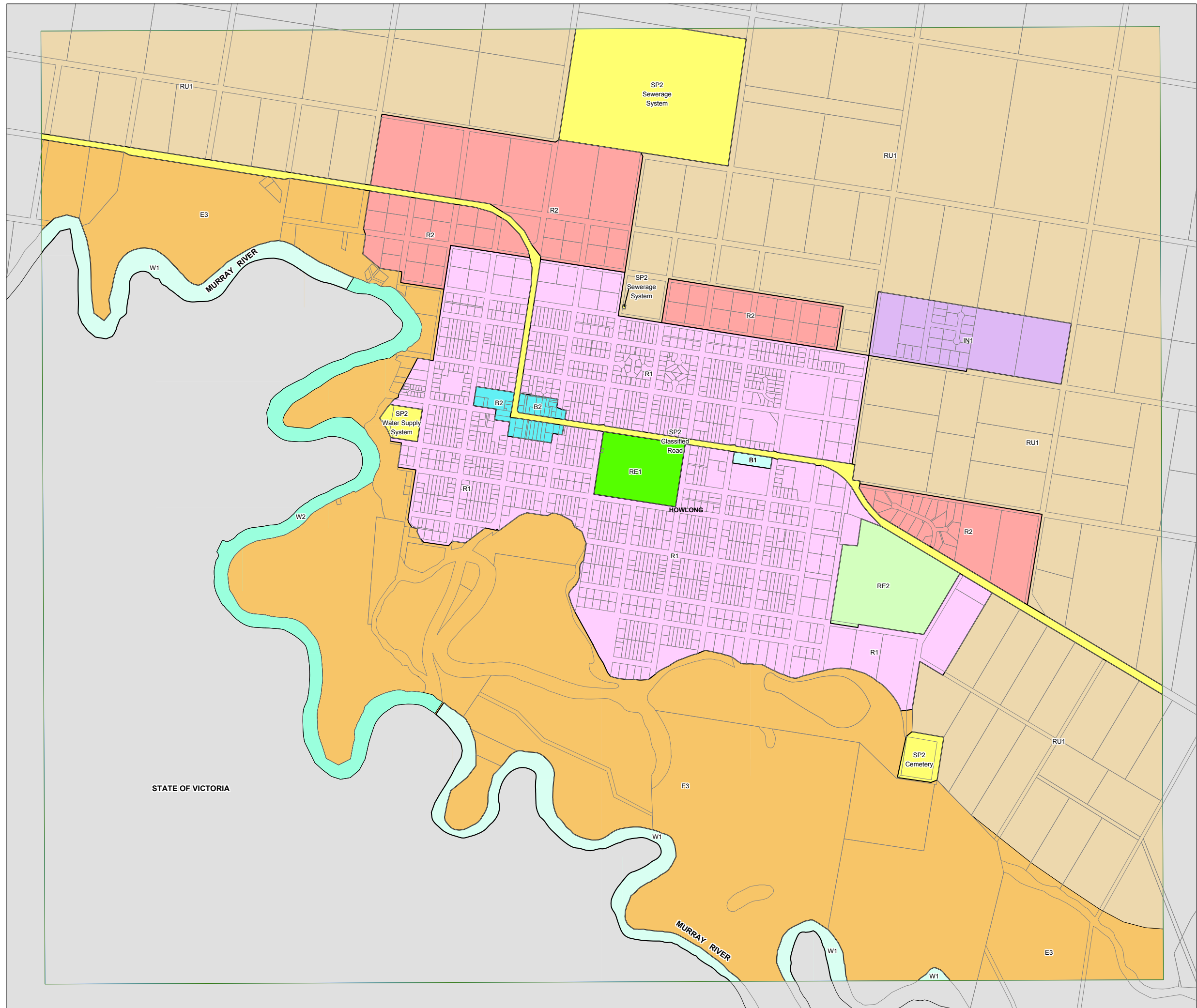
## Land Zoning Map - Sheet LZN\_009A

### Zone

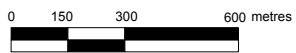
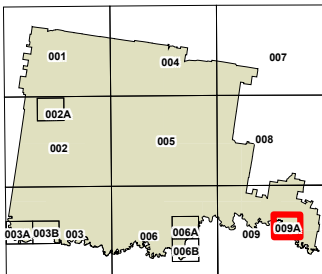
- B1 Neighbourhood Centre
- B2 Local Centre
- B6 Enterprise Corridor
- E1 National Parks and Nature Reserves
- E3 Environmental Management
- IN1 General Industrial
- R1 General Residential
- R2 Low Density Residential
- R5 Large Lot Residential
- RE1 Public Recreation
- RE2 Private Recreation
- RU1 Primary Production
- RU3 Forestry
- RU5 Village
- SP1 Special Activities
- SP2 Infrastructure
- W1 Natural Waterways
- W2 Recreational Waterways

### Cadastre

- Cadastre 12/11/2010 (c) NSW LPMA



STATE OF VICTORIA



Projection: GDA 1994  
Zone 55

Scale: 1:20,000 @ A3

Map Identification Number:

2300\_COM\_LZN\_009A\_020\_20160329