



Gosford Local Environmental Plan 2014

Height of Buildings Map Sheet HOB_015A

Maximum Building Height (m)

A	0
I	8.5
J	9
K1	10
K2	10.5
L1	11
L2	11.5
M	12
N	14.25
O	15
P1	17
P2	18
Q	19.75
R	22
S	24
U	30
V	36
X	48
AA1	60
AA2	72
GCC	SEPP (Gosford City Centre) 2018

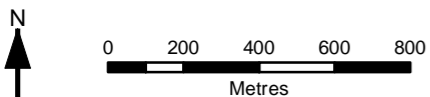
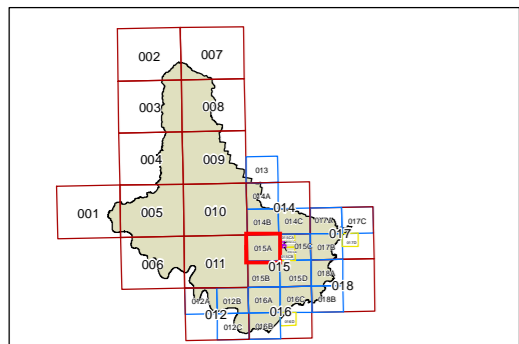
Maximum Building Height (RL)

Height shown on map in RL (m)

Lightest Grey	0 - 19.9
Light Grey	20 - 29.9
Medium-Light Grey	30 - 39.9
Medium Grey	40 - 49.9
Medium-Dark Grey	50 - 59.9
Dark Grey	60 - 69.9
Darkest Grey	70 - 79.9
Black	80 - 89.9
Blue outline	Refer to Clause 4.3, 4.3A

Cadastre

Cadastre 07/06/2018 © Spatial Services



Projection: GDA 1994 MGA Zone 56 Scale: 1:20,000 @ A3

Map Identification Number: 3100_COM_HOB_015A_020_20180613

