



# Gosford Local Environmental Plan 2014

Height of Buildings Map  
Sheet HOB\_015CAB

### Maximum Building Height (m)

- A 0
- I 8.5
- J 9
- K1 10
- K2 10.5
- L1 11
- L2 11.5
- M 12
- N 14.25
- O 15
- P1 17
- P2 18
- Q 19.75
- R 22
- S 24
- U 30
- V 36
- X 48
- AA1 60
- AA2 72

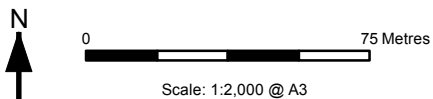
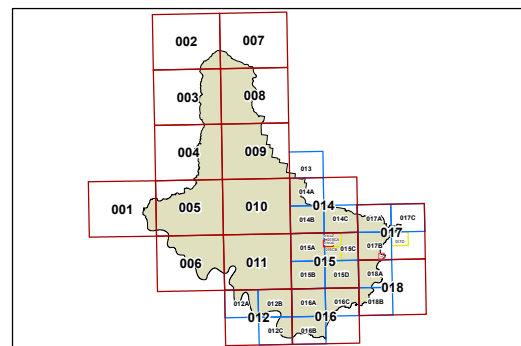
### Maximum Building Height (RL)

Height Shown on map in RL (m)

- 0-19.9
- 20-29.9
- 30-39.9
- 40-49.9
- 50-59.9
- 60-69.9
- 70-79.9
- 80-89.9
- Refer to Clause 4.3, 4.3A

### Cadastre

- Base data 01/01/2005 © Land & Property Information (LPI)
- Addendum data 01/09/2013 © Gosford City Council



Projection: GDA 1994  
Zone 56

Map identification number:  
3100\_COM\_HOB\_015CAB\_002\_20140110

