



# Gosford Local Environmental Plan 2014

## Height of Buildings Map Sheet HOB\_015CAB

### Maximum Building Height (m)

A	0
I	8.5
J	9
K1	10
K2	10.5
L1	11
L2	11.5
M	12
N	14.25
O	15
P1	17
P2	18
Q	19.75
R	22
S	24
U	30
V	36
X	48
AA1	60
AA2	72

**GCC** SEPP (Gosford City Centre) 2018

### Maximum Building Height (RL)

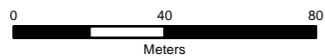
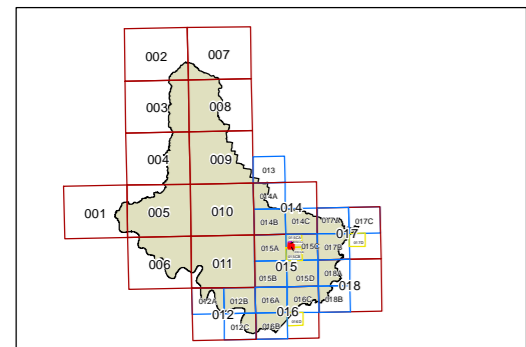
Height shown on map in RL (m)

0 - 19.9
20 - 29.9
30 - 39.9
40 - 49.9
50 - 59.9
60 - 69.9
70 - 79.9
80 - 89.9

Refer to Clause 4.3, 4.3A

### Cadastre

Cadastre 07/06/2018 © Spatial Services



Projection: GDA 1994  
MGA Zone 56

Scale: 1:2,000 @ A3

Map Identification Number: 3100\_COM\_HOB\_015CAB\_002\_20180613

