

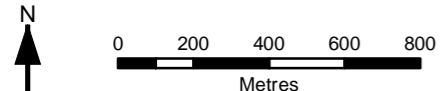
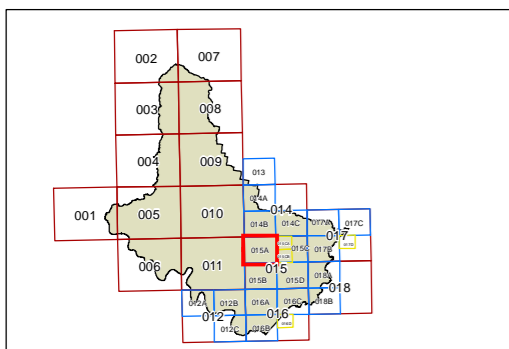
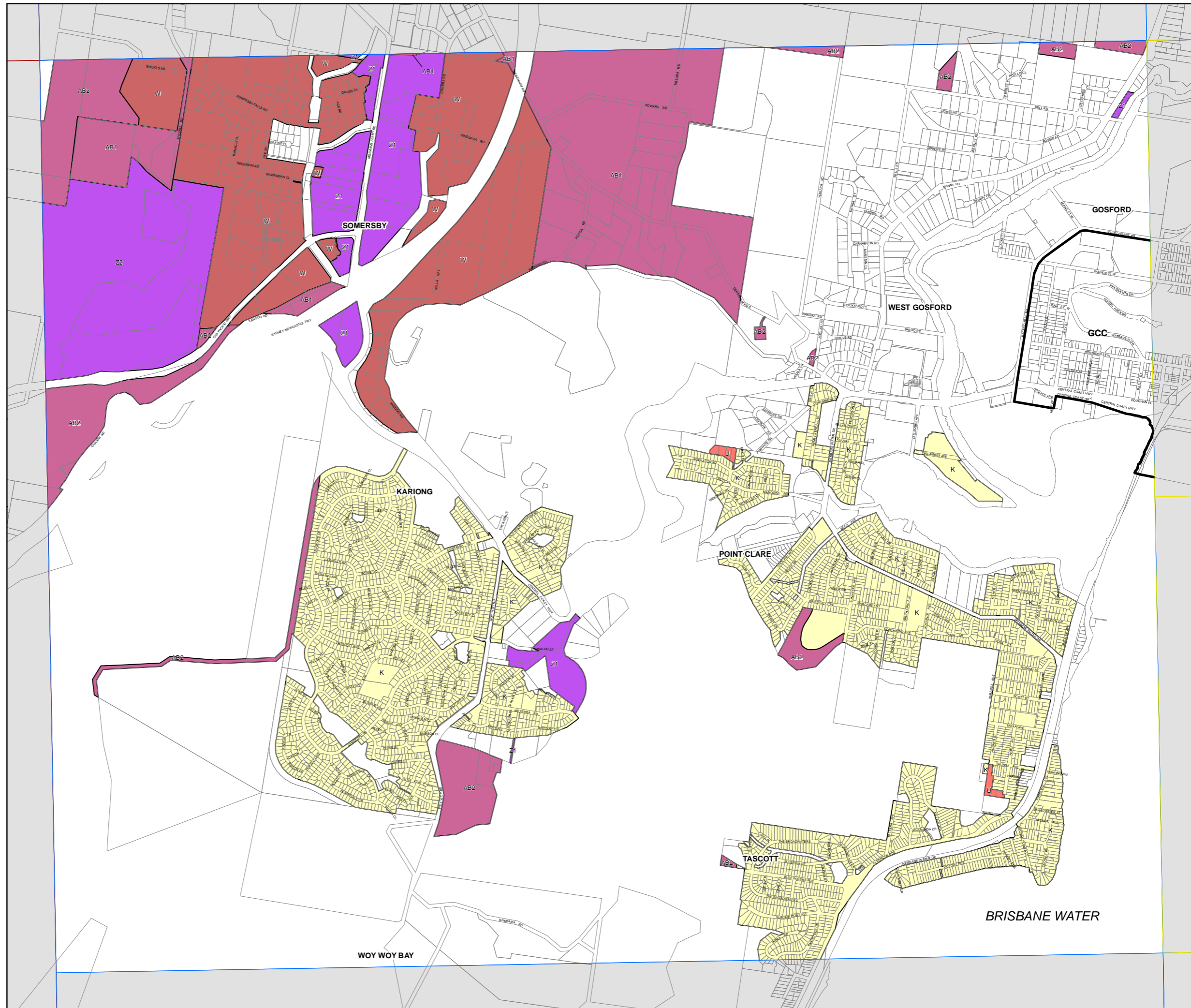


Gosford Local Environmental Plan 2014

Lot Size Map Sheet LSZ_015A

Minimum Lot Size (sq m)

- K 550
- O 650
- R 750
- U 1,850
- W 4,000
- Y 10,000 (1 ha)
- Z1 20,000 (2 ha)
- Z2 40,000 (4 ha)
- AB1 200,000 (20 ha)
- AB2 400,000 (40 ha)
- GCC SEPP (Gosford City Centre) 2018
- Cadastre 07/06/2018 © Spatial Services



Projection: GDA 1994
MGA Zone 56
Scale: 1:20,000 @ A3

Map Identification Number: 3100_COM_LSZ_015A_020_20180613