
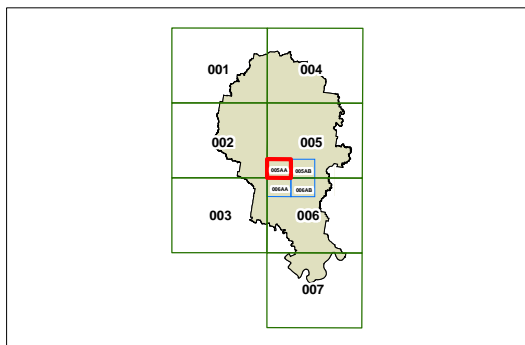
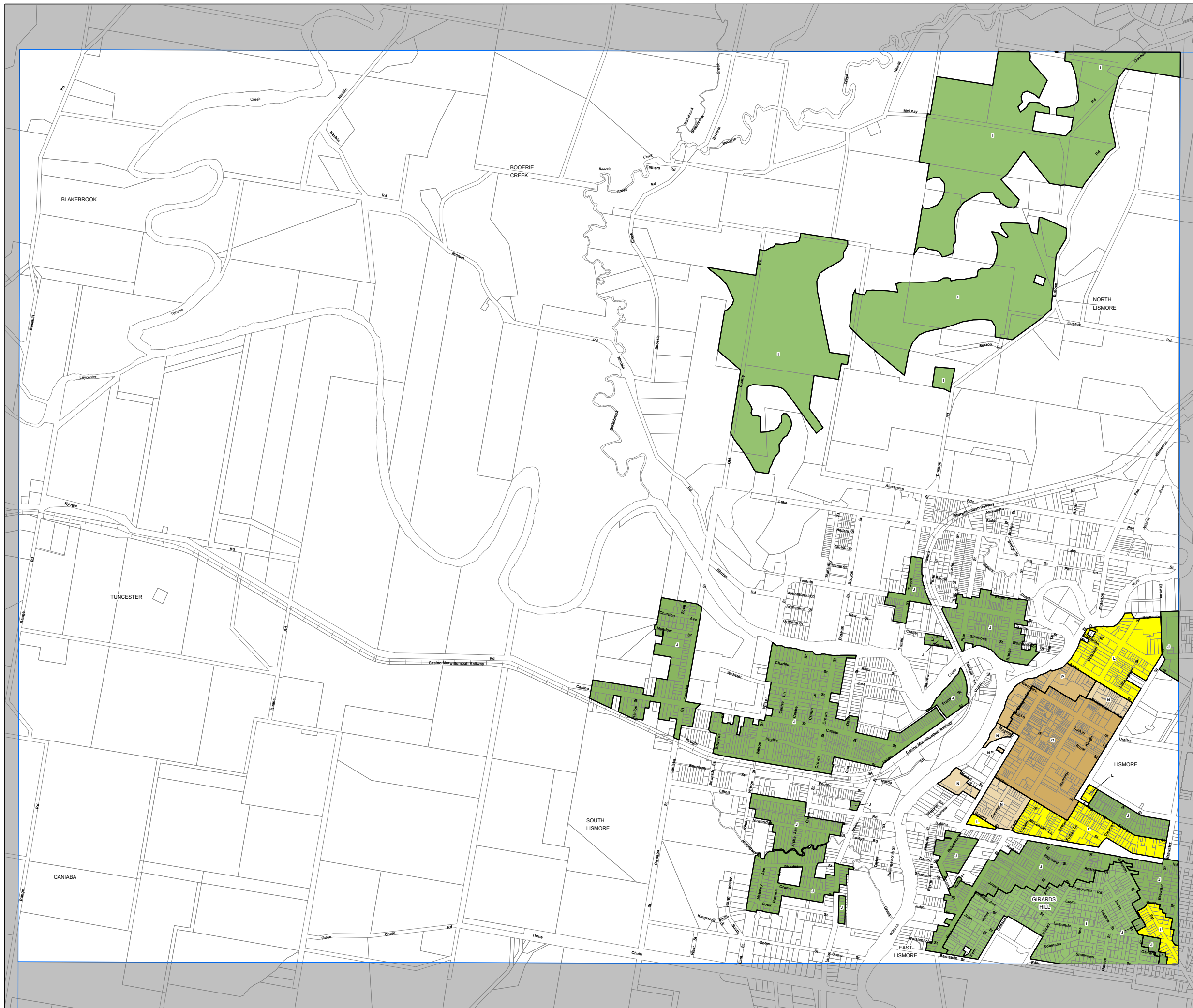


Maximum Building Height (m)

- I 8.5
- J 9
- L 11.5
- N 14.5
- P 17.5
- Q 20.5

Cadastral

 Cadastral Base Data 17/11/2013 © Land and Property Information (LPI)



0 200 400 600 800 Metres

Scale 1:20,000 @ A3

Projection GDA 1994
MGA Zone 56