



# Lismore Local Environmental Plan 2012

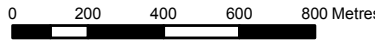
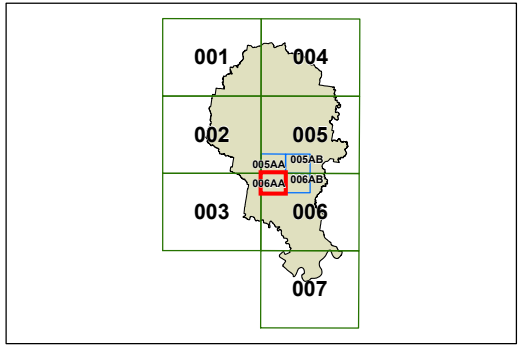
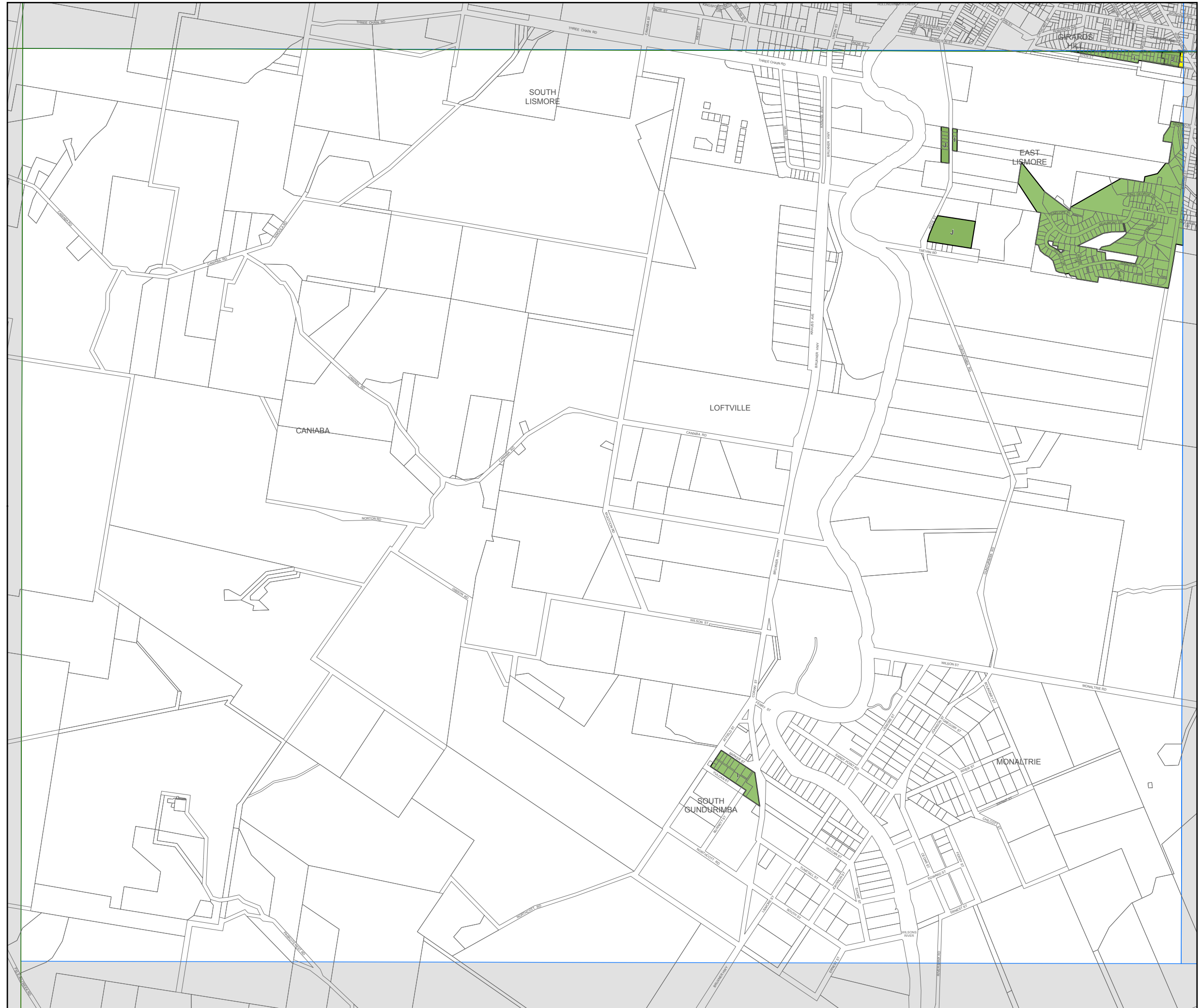
## Height of Buildings Map - Sheet HOB\_006AA

### Maximum Building Height (m)

- I 8.5
- J 9
- L 11.5
- N 14.5
- P 17.5
- Q 20.5

### Cadastral

Cadastral 24/07/2013 © Land and Property Information (LPI)



Scale: 1:20,000 @ A3

Projection: GDA 1994  
MGA Zone 56