




**Lismore  
Local Environmental  
Plan 2012**

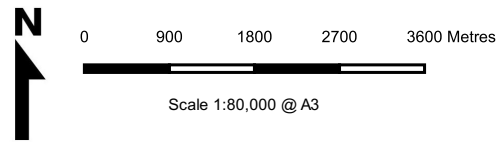
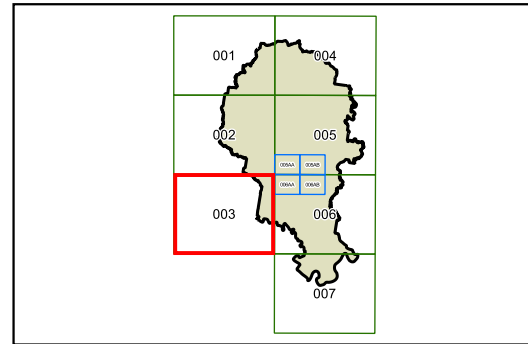
**Lot Size Map - Sheet LSZ\_003**

**Minimum Lot Size (sq m)**

<b>D</b> 300	<b>X1</b> 5,000
<b>F</b> 400	<b>X2</b> 7,000
<b>I</b> 500	<b>X3</b> 8,000
<b>M</b> 600	<b>X4</b> 9,000
<b>Q</b> 700	<b>Y1</b> 1ha
<b>S</b> 800	<b>Y2</b> 1.5ha
<b>T</b> 900	<b>Z1</b> 2ha
<b>U1</b> 1,000	<b>Z2</b> 3ha
<b>U2</b> 1,200	<b>Z3</b> 4ha
<b>U3</b> 1,500	<b>AA</b> 5ha
<b>V1</b> 2,000	<b>AB1</b> 10ha
<b>V2</b> 2,500	<b>AB2</b> 15ha
<b>W1</b> 3,000	<b>AB3</b> 20ha
<b>W2</b> 3,500	<b>AB4</b> 40ha
<b>W3</b> 3,600	
<b>W4</b> 4,000	

**Cadastre**

 Cadastre 19/11/2020 © Spatial Services



Projection GDA 1994  
MGA Zone 56

Map Identification Number: 4850\_COM\_LSZ\_003\_080\_20201119

