

Floor space ratio map - sheet FSR-014

Maximum Floor Space Ratio (n:1)

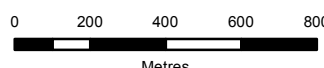
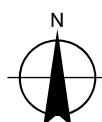
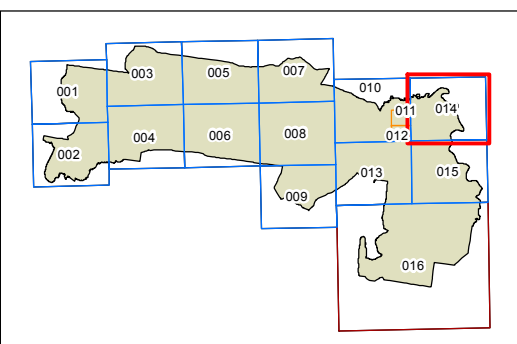
- A1 0.01
- A2 0.1
- A3 0.15
- A4 0.25
- D 0.5
- F 0.6
- G 0.65
- I 0.75
- N 1.0
- P 1.2
- S1 1.5
- S2 1.7
- T 2.0
- U 2.5
- V 3.0
- X 4.0
- Z 5.0
- refer to clause 4.4
- refer to clause 7.29
- refer to clause 7.32

State Environmental Planning Policies

- SSP SEPP (State Significant Precincts) 2005
- SGC SEPP (Sydney Regional Growth Centres) 2006
- WSP SEPP (Western Sydney Parklands) 2009

Cadastre

- Cadastre 21/8/2017 © Land and Property Information



Scale: 1:20,000 @ A3

Projection GDA 1994  
MGA Zone 56

Map identification number:  
4900\_COM\_FSR\_014\_020\_20170821

