

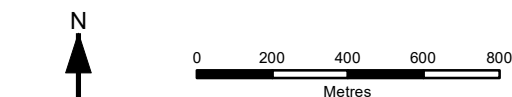
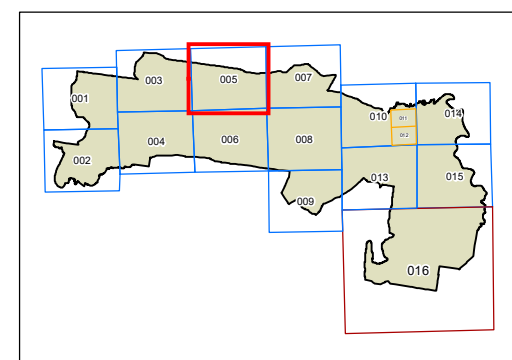
Land zoning map - sheet LZN-005

Zone

- B1** Neighbourhood Centre
- B2** Local Centre
- B3** Commercial Core
- B4** Mixed Use
- B5** Business Development
- B6** Enterprise Corridor
- E1** National Parks and Nature Reserves
- E2** Environmental Conservation
- E3** Environmental Management
- IN1** General Industrial
- IN2** Light Industrial
- IN3** Heavy Industrial
- R1** General Residential
- R2** Low Density Residential
- R3** Medium Density Residential
- R4** High Density Residential
- R5** Large Lot Residential
- RE1** Public Recreation
- RE2** Private Recreation
- RU1** Primary Production
- RU2** Rural Landscape
- RU4** Primary Production Small Lots
- SP1** Special Activities
- SP2** Infrastructure
- W1** Natural Waterways
- SSP** SEPP (State Significant Precincts) 2005
- SGC** SEPP (Sydney Region Growth Centres) 2006
- WSP** SEPP (Western Sydney Parklands) 2009
- MIC** SEPP (Major Infrastructure Corridors) 2020
- WSA** SEPP (Western Sydney Aerotropolis) 2020

Cadastre

Cadastre 07/09/2020 © Spatial Services



Projection: GDA 1994
MGA Zone 56

Map Identification Number: 4900_COM_LZN_005_020_20200907

