



Manly Local Environmental Plan 2013

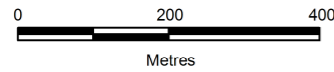
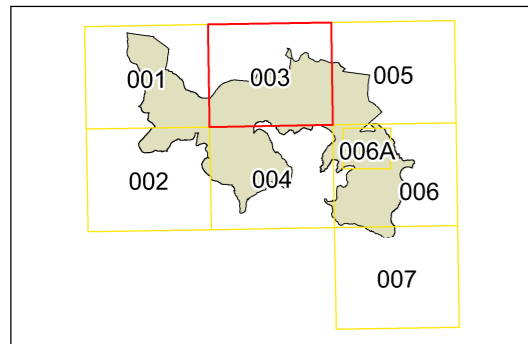
Key Sites Map - Sheet KYS_003

Key Sites

- Precinct 1
- Precinct 2
- Precinct 3
- Precinct 4
- Precinct 5
- Precinct 6
- Precinct 7
- Precinct 10
- Precinct 11
- Precinct 12
- Precinct 13
- Precinct 14
- Precinct 15
- Buildable Area
- Environmental Conservation
- 5m Pathway that extends from Archbishop's Residence to Spring Cove (Precinct 4, 5, 6, 10, 11)
- Requirement for Development Control Plan
- View Cone
- View Corridor
- Dalwood Children's Home & Manly Hospital refer to clause 6.14 (5)(e)

Cadastre

- Cadastre - Base Data 18/12/2008
- © NSW Land and Property Information (LPI). Addendum Data 16/06/2014
- © Manly Council



Projection: GDA 1994 Zone 56
Scale 1: 10,000 @ A3

Map identification number:
5150_COM_KYS_003_010_20151210

