



Mid-Western Regional Local Environmental Plan 2012

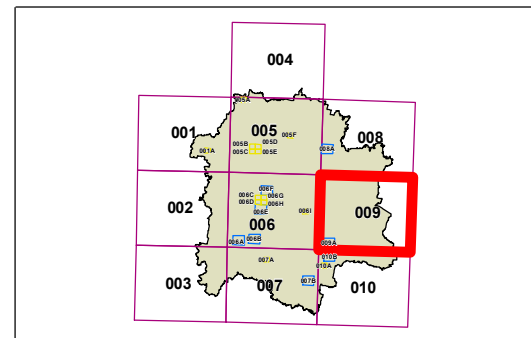
Land Zoning Map - Sheet LZN_009

Zone

- B1 Neighbourhood Centre
- B2 Local Centre
- B3 Commercial Core
- B4 Mixed Use
- B5 Business Development
- E1 National Parks and Nature Reserves
- E3 Environmental Management
- IN1 General Industrial
- IN2 Light Industrial
- IN3 Heavy Industrial
- R1 General Residential
- R2 Low Density Residential
- R3 Medium Density Residential
- R5 Large Lot Residential
- RE1 Public Recreation
- RE2 Private Recreation
- RU1 Primary Production
- RU3 Forestry
- RU4 Primary Production Small Lots
- RU5 Village
- SP1 Special Activities
- SP2 Infrastructure
- SP3 Tourist

Cadastre

- Cadastre 15/12/2010 Land and Property Information (LPI)

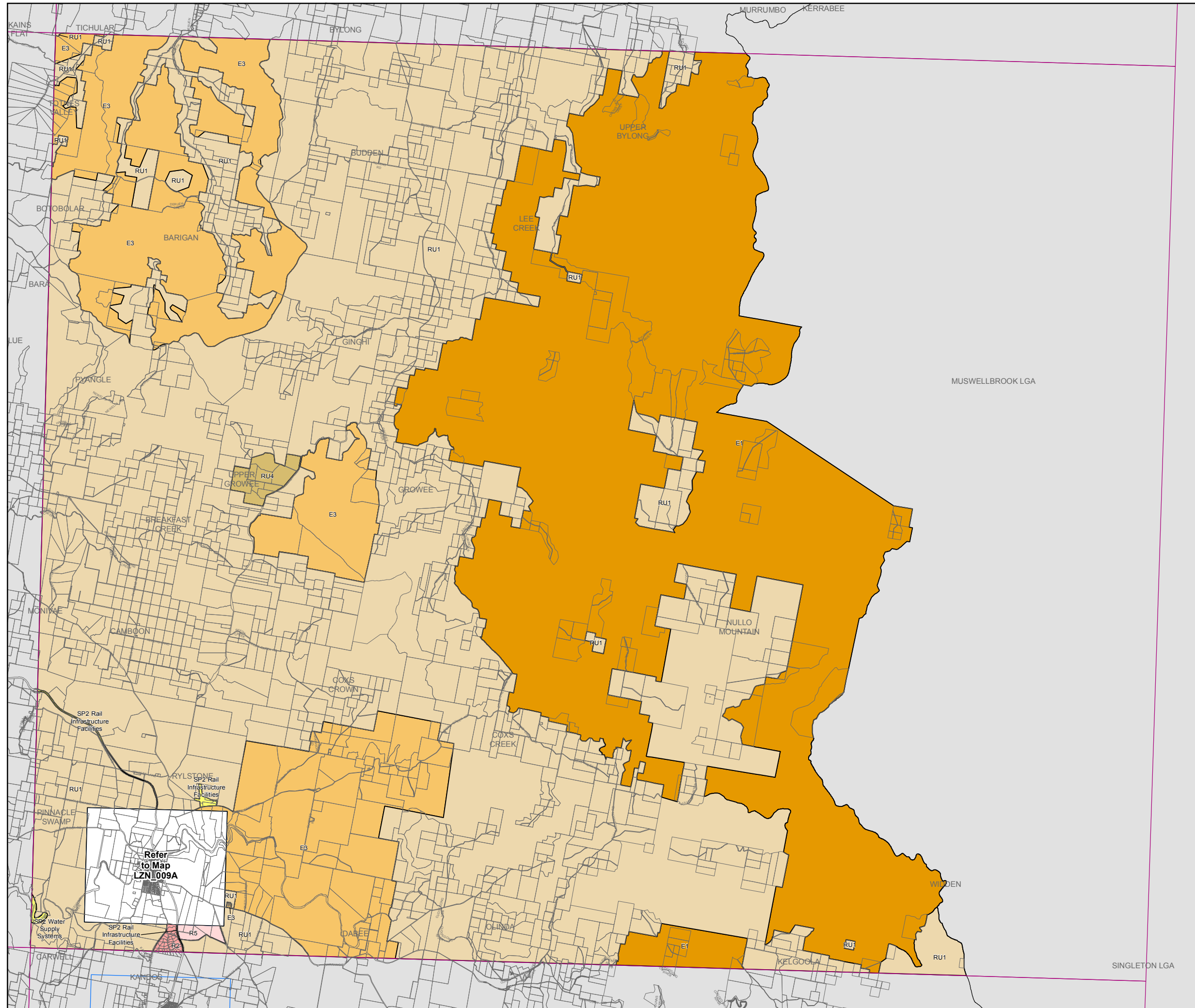


0 1,600 3,200 4,800 6,400 Metres

Scale: 1:160,000 @ A3

Projection: GDA 1994
MGA Zone 55

Map identification number: 5270_COM_LZN_009_160_20150501



MUSWELLBROOK LGA

SINGLETON LGA