



# Nambucca Local Environmental Plan 2010

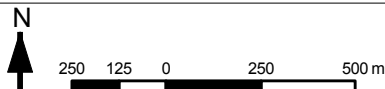
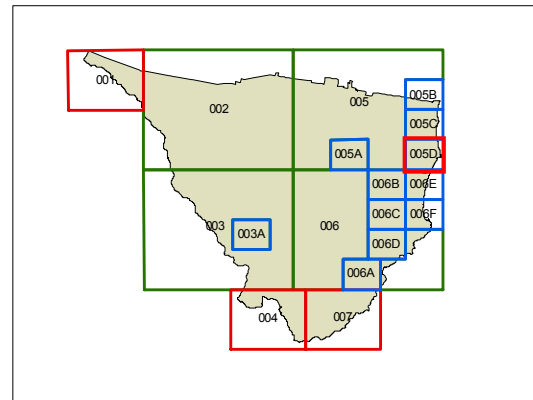
## Land Zoning Map - Sheet LZN\_005D

### Zones

- B1 Neighbourhood Centre
- B2 Local Centre
- B3 Commercial Core
- B4 Mixed Use
- B7 Business Park
- E1 National Parks and Nature Reserves
- E2 Environmental Conservation
- E3 Environmental Management
- IN1 General Industrial
- IN2 Light Industrial
- R1 General Residential
- R2 Low Density Residential
- R3 Medium Density Residential
- R4 High Density Residential
- R5 Large Lot Residential
- RE1 Public Recreation
- RE2 Private Recreation
- RU1 Primary Production
- RU2 Rural Landscape
- RU3 Forestry
- RU5 Village
- SP1 Special Activities
- SP2 Infrastructure
- SP3 Tourist
- W1 Natural Waterways
- W2 Recreational Waterways

### Cadastre

Base Data 01/02/2008 © NSW LPMA  
 Addendum Data 15/06/2010 © Nambucca Shire Council



Projection: GDA 1994  
 Zone 56  
 Map Identification Number:  
 5700\_COM\_LZN\_005D\_020\_20110714

