



Nambucca Local Environmental Plan 2010

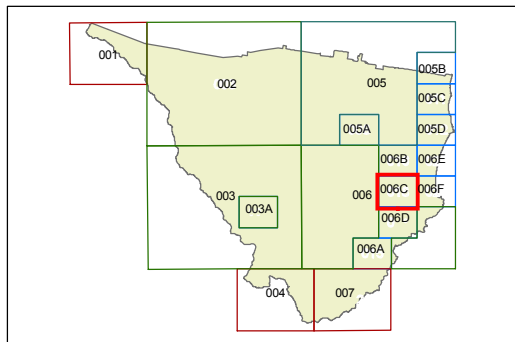
Land Zoning Map - Sheet LZN_006C

Zone

- B1 Neighbourhood Centre
- B2 Local Centre
- B3 Commercial Core
- B4 Mixed Use
- B7 Business Park
- E1 National Parks and Nature Reserves
- E2 Environmental Conservation
- E3 Environmental Management
- IN1 General Industrial
- IN2 Light Industrial
- R1 General Residential
- R2 Low Density Residential
- R3 Medium Density Residential
- R4 High Density Residential
- R5 Large Lot Residential
- RE1 Public Recreation
- RE2 Private Recreation
- RU1 Primary Production
- RU2 Rural Landscape
- RU3 Forestry
- RU5 Village
- SP1 Special Activities
- SP2 Infrastructure
- SP3 Tourist
- W1 Natural Waterways
- W2 Recreational Waterways

Cadastre

Base Data 01/02/2008 © NSW LPMA
Addendum Data 15/06/2010 © Nambucca Shire Council;



0 75 150 300 450 600 Meters

Scale: 1:20,000 @ A3

Projection: GDA 1994
Zone 56

Map identification number: 5700_COM_LZN_006C_020_20100629

