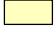




# Nambucca Local Environmental Plan 2010

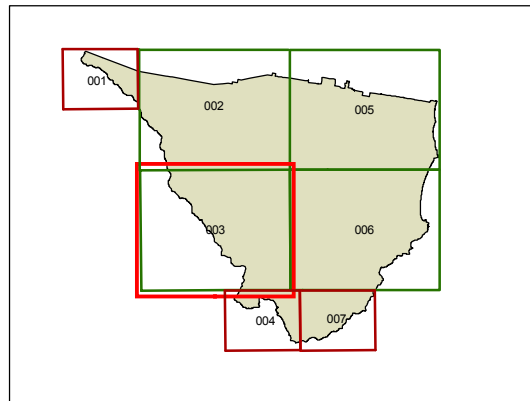
## Mineral and Extractive Resources Map - Sheet MER\_003

### Mineral and Extractive Resource

 Mineral and extractive resource

### Cadastre

Base Data 01/02/2008 © NSW LPMA  
Addendum Data 15/06/2010 © Nambucca Shire Council



0 500 1,000 2,000 3,000 m

Scale: 1: 80000 @ A3

Projection: GDA 1994  
Zone 56  
Map Identification Number:  
5700\_COM\_MER\_003\_080\_20100629

