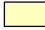




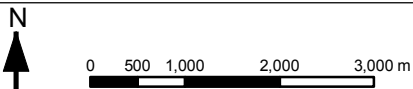
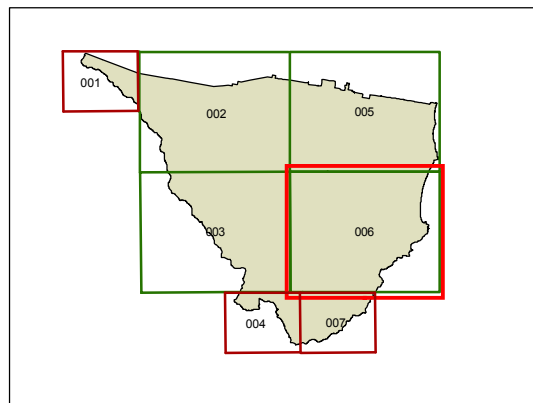
# Nambucca Local Environmental Plan 2010

## Mineral and Extractive Resources Map - Sheet MER\_006

### Mineral and Extractive Resource

 Mineral and extractive resource  
**Cadastre**

Base Data 01/02/2008 © NSW LPMA  
Addendum Data 15/06/2010 © Nambucca Shire Council



Projection: GDA 1994  
Zone 56  
Map Identification Number:  
5700\_COM\_MER\_006\_080\_20100629