



# Newcastle Local Environmental Plan 2012

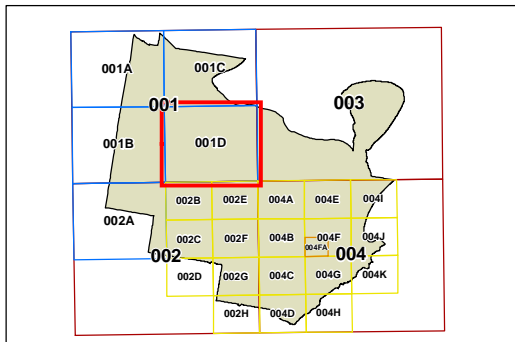
## Land Zoning Map - Sheet LZN\_001D

### Zone

- B1 Neighbourhood Centre
- B2 Local Centre
- B3 Commercial Core
- B4 Mixed Use
- B5 Business Development
- E1 National Parks and Nature Reserves
- E2 Environmental Conservation
- E3 Environmental Management
- E4 Environmental Living
- IN1 General Industrial
- IN2 Light Industrial
- IN3 Heavy Industrial
- R2 Low Density Residential
- R3 Medium Density Residential
- R4 High Density Residential
- RE1 Public Recreation
- RE2 Private Recreation
- SP1 Special Activities
- SP2 Infrastructure
- W2 Recreational Waterways
- UL Unzoned Land
- MD SEPP (Major Development) 2005
- TP SEPP (Three Ports)

### Cadastre

Base data 01/08/2007 © Land and Property Information (LPI)  
Addendum data 13/03/2014 © City of Newcastle



0 200 400 Metres

Scale: 1:20,000 @ A3

Projection: GDA 1994  
MGA Zone 56  
Map Identification Number: 5900\_COM\_LZN\_001D\_020\_20140509

