



# North Sydney Local Environmental Plan 2013

## Height of Buildings Map - Sheet HOB\_003

### Maximum Building Height (m)

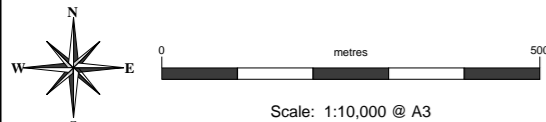
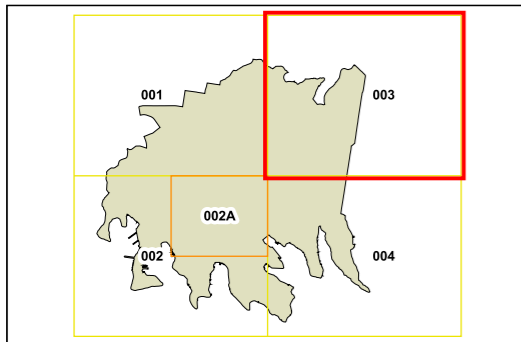
A	1	T2	26
I	8.5	U1	30
K	10	U2	33
L	11	W1	40
M	12	W2	42
N1	13	X	49
N2	14.5	Y	50
O1	15	Z	56
O2	16	AD	132
Q1	19.15	AF	180
Q2	20	Area 1	Refer to Clause 4.3A
R	21	Area 2	Refer to Clause 4.3A(2A)
S	24	Area 3	Refer to Clause 4.3A(2B)
T1	25		

### Maximum Building Height (RL m)

[White]	0 - 20
[Light Grey]	21 - 40
[Medium-Light Grey]	41 - 60
[Medium Grey]	61 - 80
[Dark-Medium Grey]	81 - 100
[Dark Grey]	101 - 120
[Very Dark Grey]	121 - 140
[Black-White]	141 - 160
[Black]	161 - 180
[Dark Grey]	181 - 200
[Black]	200 +

### Cadastre

[White] Cadastre 26/10/21 © North Sydney Council



Projection GDA 1994  
MGA Zone 56

Map identification number:  
5950\_COM\_HOB\_003\_010\_20211026

