



**North Sydney Local  
Environmental  
Plan 2013**

**Height of Buildings Map  
- Sheet HOB\_004**

**Maximum Building Height (m)**

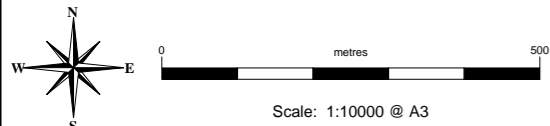
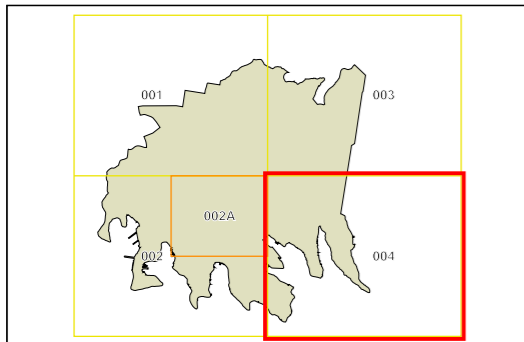
A	1	T1	25
I	8.5	T2	26
K	10	U1	30
L	11	U2	33
M	12	W1	40
N	13	W2	42
O1	15	X	49
O2	16	Y	50
Q1	19.15	Z	56
Q2	20	AF	180
S	24		

**Maximum Building Height (RL m)**

[White]	0 - 20
[Lightest Grey]	21 - 40
[Light Grey]	41 - 60
[Medium-Light Grey]	61 - 80
[Medium Grey]	81 - 100
[Medium-Dark Grey]	101 - 120
[Dark Grey]	121 - 140
[Very Dark Grey]	141 - 160
[Darkest Grey]	161 - 180
[Black]	181 - 200
[Black]	200 +

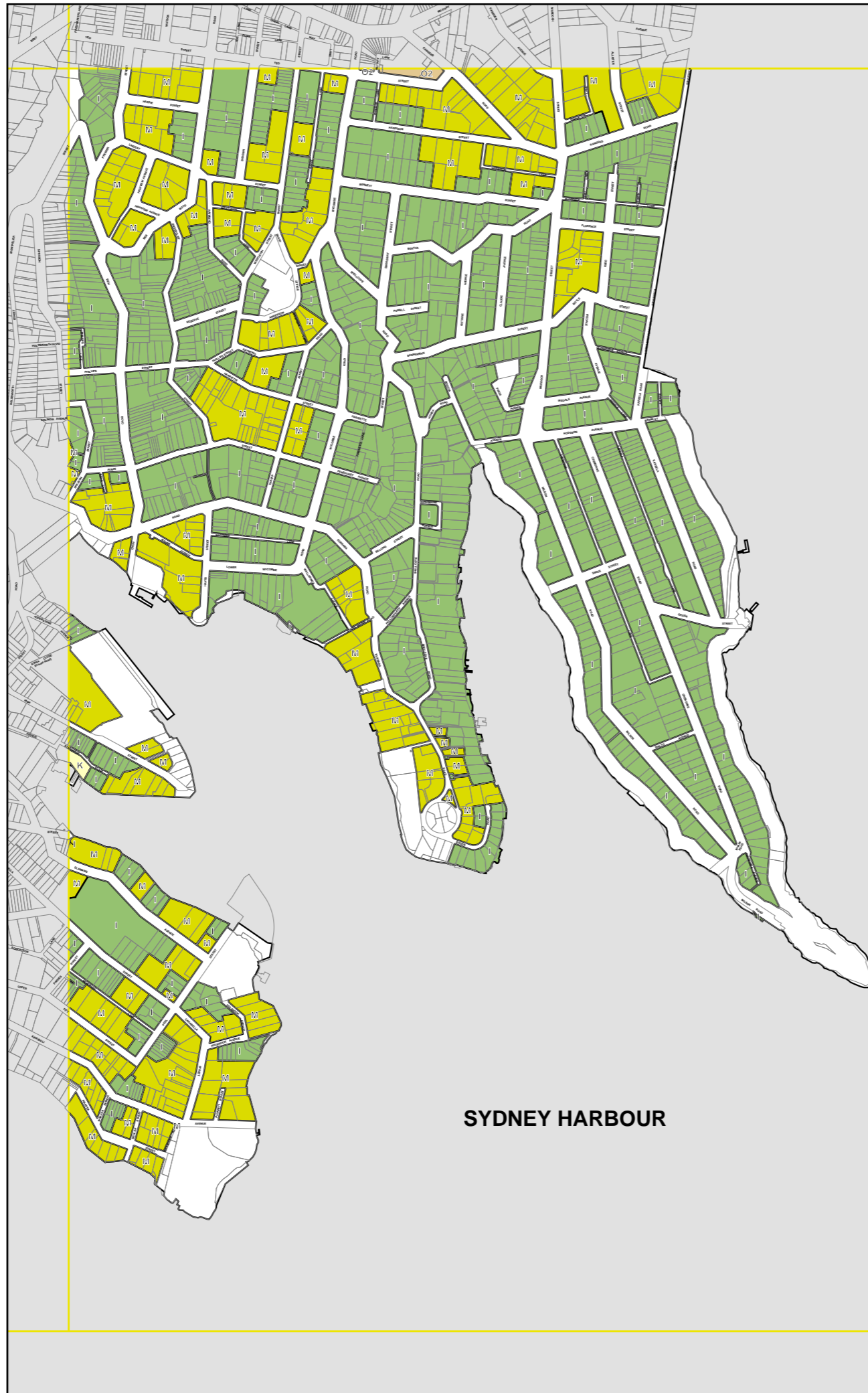
**Cadastre**

[White outline] Cadastre 13/08/19 © North Sydney Council



Projection GDA 1994  
MGA Zone 56

Map identification number:  
5950\_COM\_HOB\_004\_010\_20190813



**MOSMAN  
LGA**

**SYDNEY HARBOUR**