



Port Macquarie-Hastings Local Environmental Plan 2011

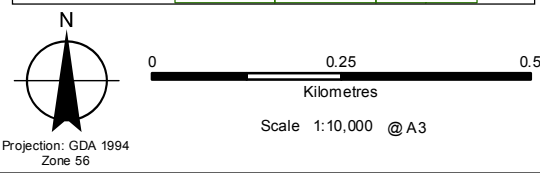
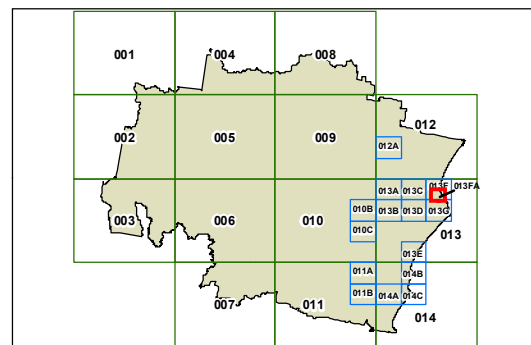
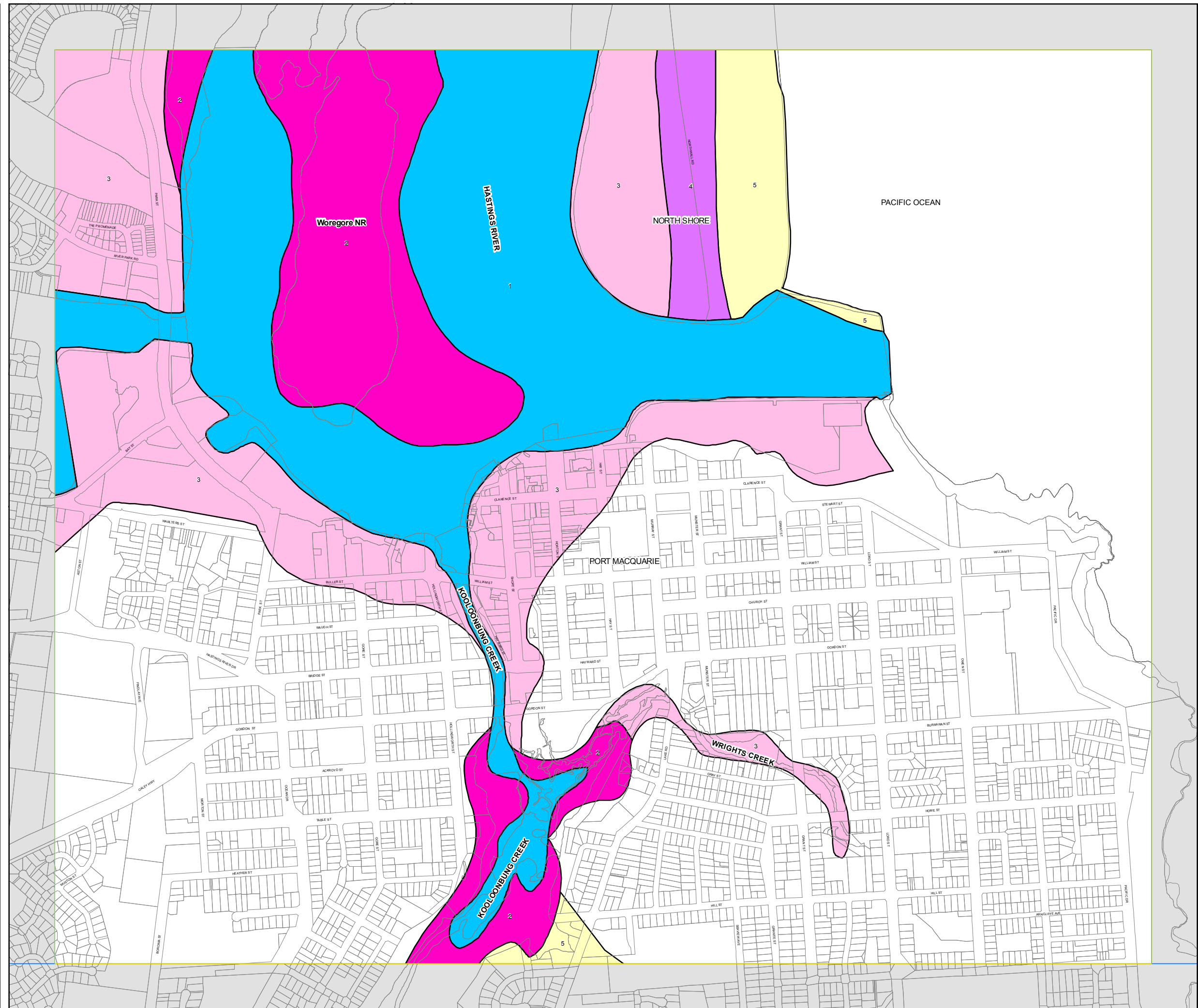
Acid Sulfate Soils Map Sheet ASS_013FA

Acid Sulfate Soils

- Class 1
- Class 2
- Class 3
- Class 4
- Class 5

Cadastre

Base data 1994 © Land and Property Management Authority of NSW (LPMA)
Addendum data © 30/08/2010 PMHC



Projection: GDA 1994
Zone 56

Map identification number: 6380_COM_ASS_013FA_010_20101215