



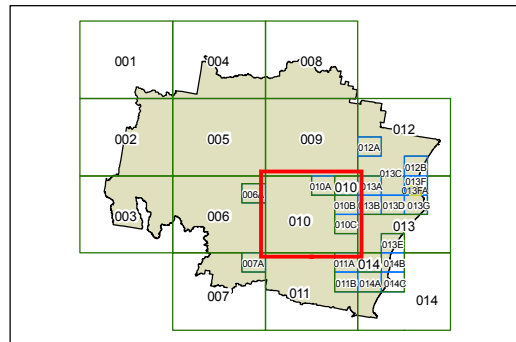
# Port Macquarie-Hastings Local Environmental Plan 2011

## Land Zoning Map - Sheet LZN\_010

- Zone**
- B1 Neighbourhood Centre
  - B2 Local Centre
  - B3 Commercial Core
  - B4 Mixed Use
  - B5 Business Development
  - B7 Business Park
  - E1 National Parks and Nature Reserves
  - E2 Environmental Conservation
  - E3 Environmental Management
  - E4 Environmental Living
  - IN1 General Industrial
  - IN2 Light Industrial
  - IN3 Heavy Industrial
  - IN4 Working Waterfront
  - R1 General Residential
  - R2 Low Density Residential
  - R3 Medium Density Residential
  - R4 High Density Residential
  - R5 Large Lot Residential
  - RE1 Public Recreation
  - RE2 Private Recreation
  - RU1 Primary Production
  - RU2 Rural Landscape
  - RU3 Forestry
  - RU5 Village
  - RU6 Transition
  - SP1 Special Activities
  - SP2 Infrastructure
  - SP3 Tourist
  - W1 Natural Waterways
  - W2 Recreational Waterways
  - W3 Working Waterways
  - DM Deferred Matter

**Cadastre**

Base data 1994 © Land and Property Management Authority of NSW (LPMA)  
 Addendum data © 30/08/2010 PMHC



Projection: GDA 1994  
MGA Zone 56

Map identification number:  
6380\_COM\_LZN\_010\_080\_20110124

