



**Port Stephens
Local
Environmental
Plan 2013**

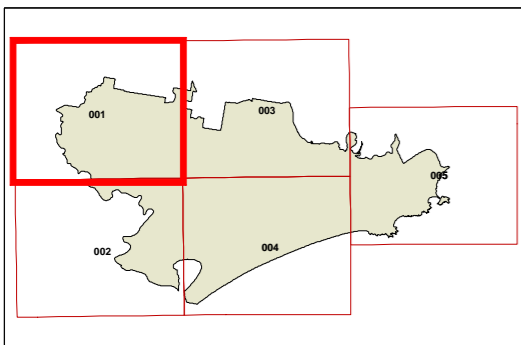
**Acid Sulfate Soils Map -
Sheet ASS_001**

Acid Sulfate Soils

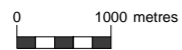
- Class 1
- Class 2
- Class 3
- Class 4
- Class 5

Cadastre

- Cadastre 18/02/2013 © Land and Property Information (LPI)



GDA 1994
MGA Zone 56



Scale: 1:80000 @ A3

Map identification number:
6400_COM_ASS_001_080_20131022

