



Port Stephens Local Environmental Plan 2013

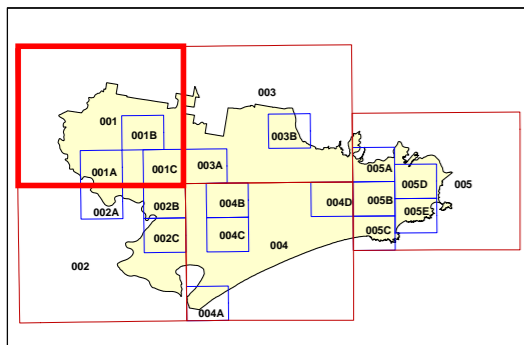
Land Zoning Map - Sheet LZN_001

Zone

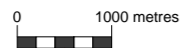
- B1 Neighbourhood Centre
- B2 Local Centre
- B3 Commercial Core
- B4 Mixed Use
- B5 Business Development
- B7 Business Park
- E1 National Parks and Nature Reserves
- E2 Environmental Conservation
- E3 Environmental Management
- E4 Environmental Living
- IN1 General Industrial
- IN2 Light Industrial
- IN4 Working Waterfront
- R1 General Residential
- R2 Low Density Residential
- R3 Medium Density Residential
- R5 Large Lot Residential
- RE1 Public Recreation
- RE2 Private Recreation
- RU1 Primary Production
- RU2 Rural Landscape
- RU3 Forestry
- RU5 Village
- SP1 Special Activities
- SP2 Infrastructure
- W1 Natural Waterways
- W2 Recreational Waterways

Cadastre

Cadastre 18/09/2017 © Spatial Services

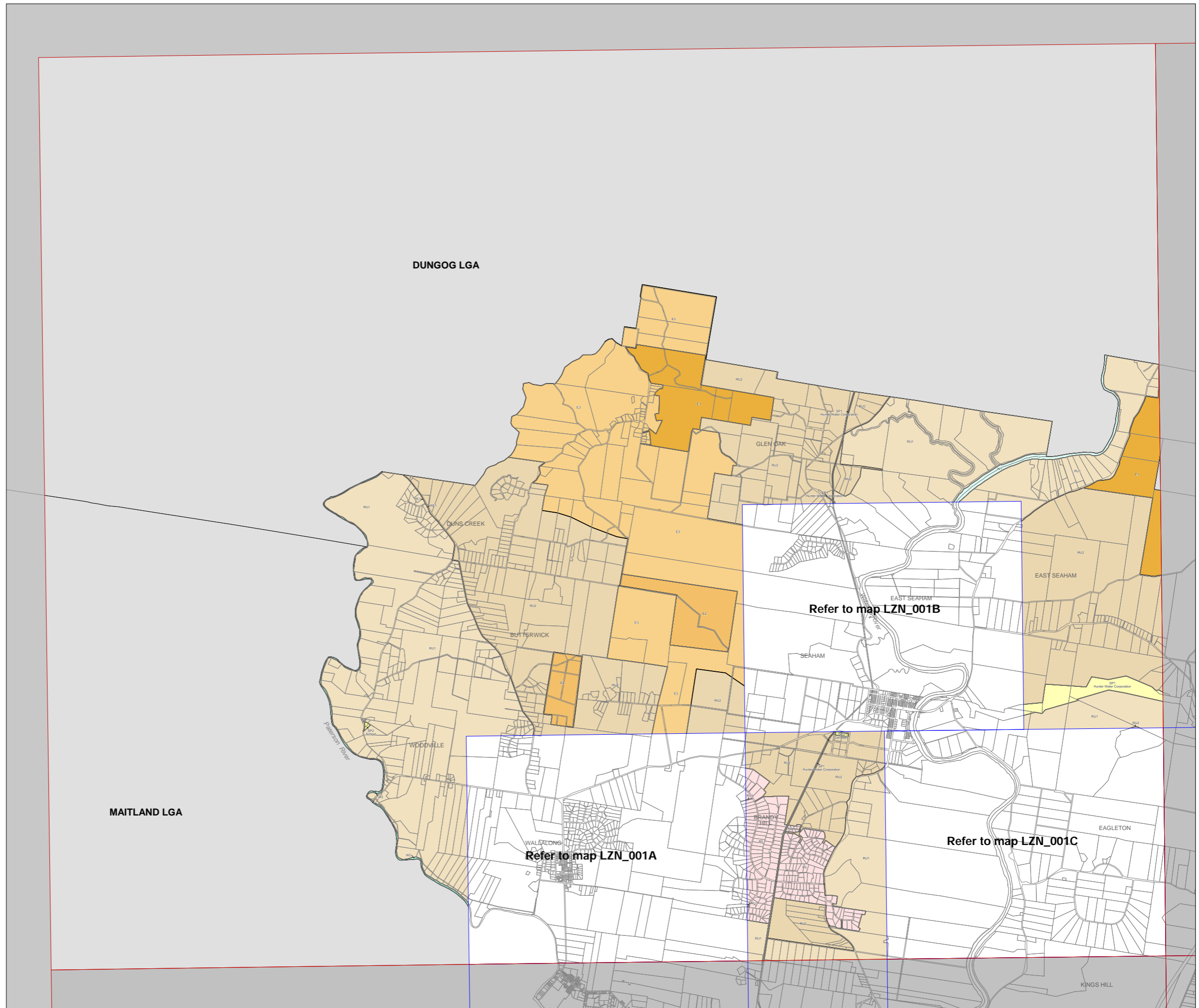


GDA 1994
MGA Zone 56



Scale 1: 80,000 @ A3

Map Identification Number :
6400_COM_LZN_001_080_20180301



DUNGOG LGA

MAITLAND LGA

Refer to map LZN_001B

Refer to map LZN_001A

Refer to map LZN_001C

Parsons River

DUNGS CREEK

BUTTERWICK

WOODVILLE

WALLALONGS

BRANDY HILL

SEAHAM

EAST SEAHAM

EAST SEAHAM

EAGLETON

KINGS HILL

Hunter Water Corporation

Hunter Water Corporation