



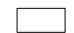
# Port Stephens Local Environmental Plan 2013

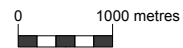
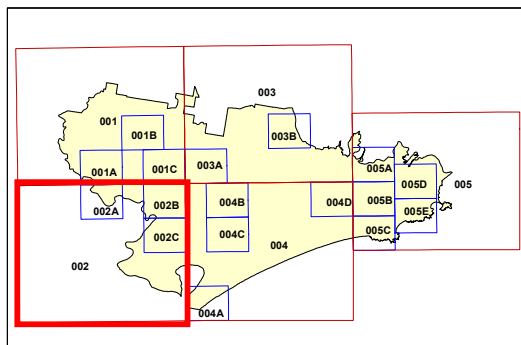
## Land Zoning Map - Sheet LZN\_002

### Zone

- |            |                                    |
|------------|------------------------------------|
| <b>B1</b>  | Neighbourhood Centre               |
| <b>B2</b>  | Local Centre                       |
| <b>B3</b>  | Commercial Core                    |
| <b>B4</b>  | Mixed Use                          |
| <b>B5</b>  | Business Development               |
| <b>B7</b>  | Business Park                      |
| <b>E1</b>  | National Parks and Nature Reserves |
| <b>E2</b>  | Environmental Conservation         |
| <b>E3</b>  | Environmental Management           |
| <b>E4</b>  | Environmental Living               |
| <b>IN1</b> | General Industrial                 |
| <b>IN2</b> | Light Industrial                   |
| <b>IN4</b> | Working Waterfront                 |
| <b>R1</b>  | General Residential                |
| <b>R2</b>  | Low Density Residential            |
| <b>R3</b>  | Medium Density Residential         |
| <b>R5</b>  | Large Lot Residential              |
| <b>RE1</b> | Public Recreation                  |
| <b>RE2</b> | Private Recreation                 |
| <b>RU1</b> | Primary Production                 |
| <b>RU2</b> | Rural Landscape                    |
| <b>RU3</b> | Forestry                           |
| <b>RU5</b> | Village                            |
| <b>SP1</b> | Special Activities                 |
| <b>SP2</b> | Infrastructure                     |
| <b>W1</b>  | Natural Waterways                  |
| <b>W2</b>  | Recreational Waterways             |

### Cadastre

-  Cadastre 01/06/2016 © Land and Property Information (LPI)



Projection: GDA 1994  
Zone 56

Scale: 1:80000 @ A3

Map Identification Number :  
6400\_COM\_LZN\_002\_080\_20160601

