



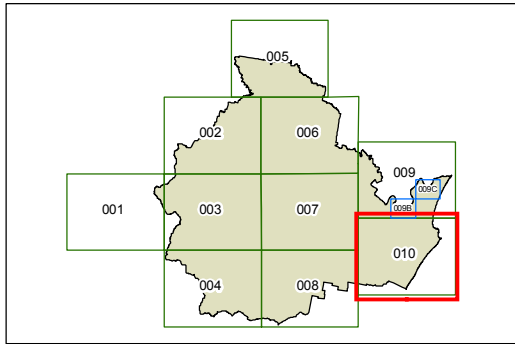
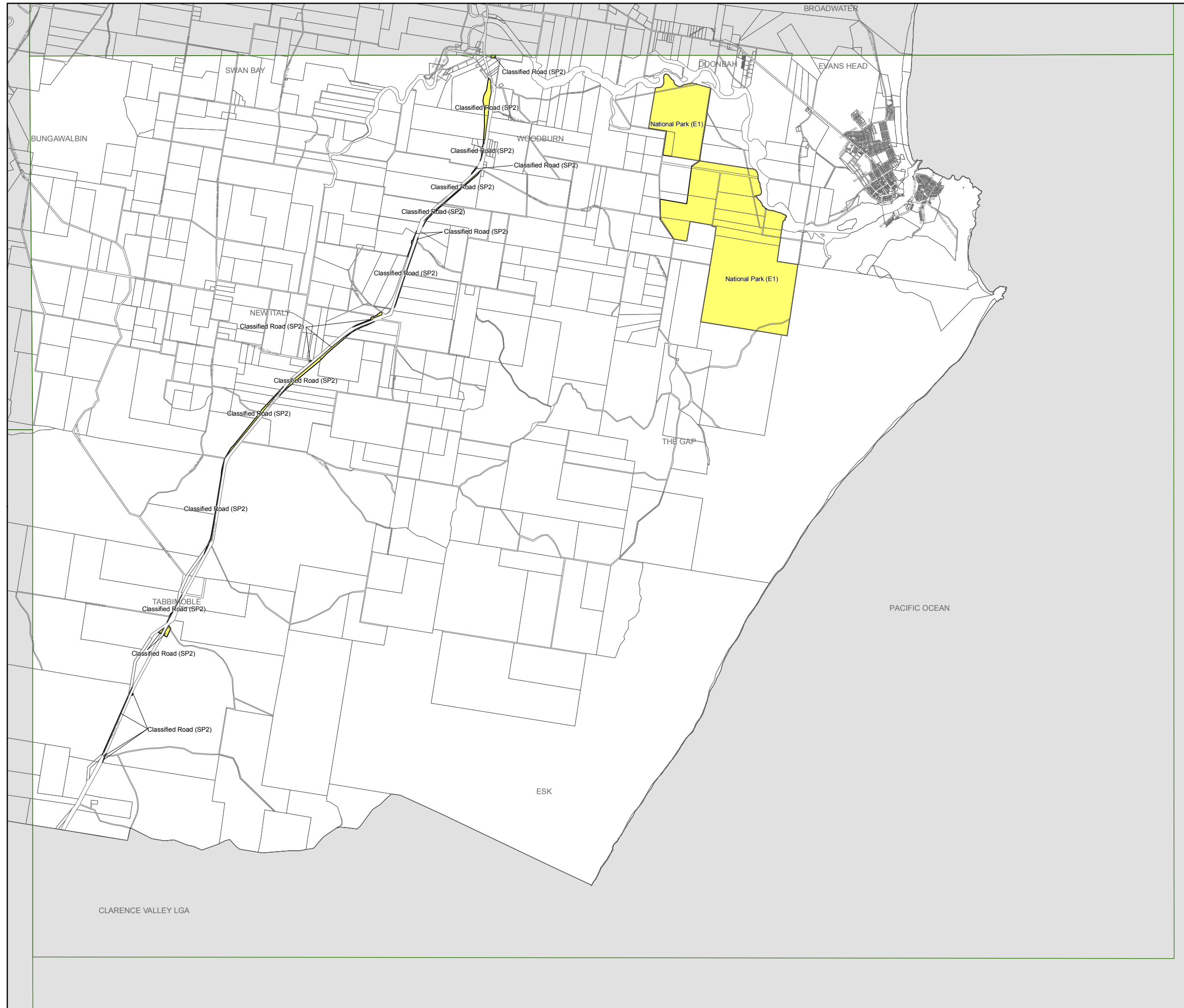
**Richmond Valley
Local Environmental
Plan 2012**

**Land Reservation Acquisition Map -
Sheet LRA_010**

- Classified Road (SP2)
- National Park (E1)
- National Park - Lots 393 and 395, DP755624

Cadastre

Cadastre 23/04/2009 © Land and Property Information (LPI)



Projection: GDA 1994
MGA Zone 56

Map identification number:
6610_COM_LRA_010_080_20120131