



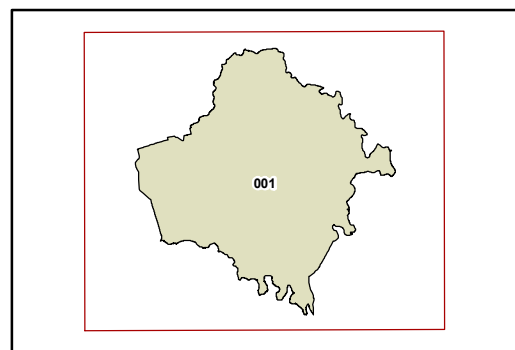
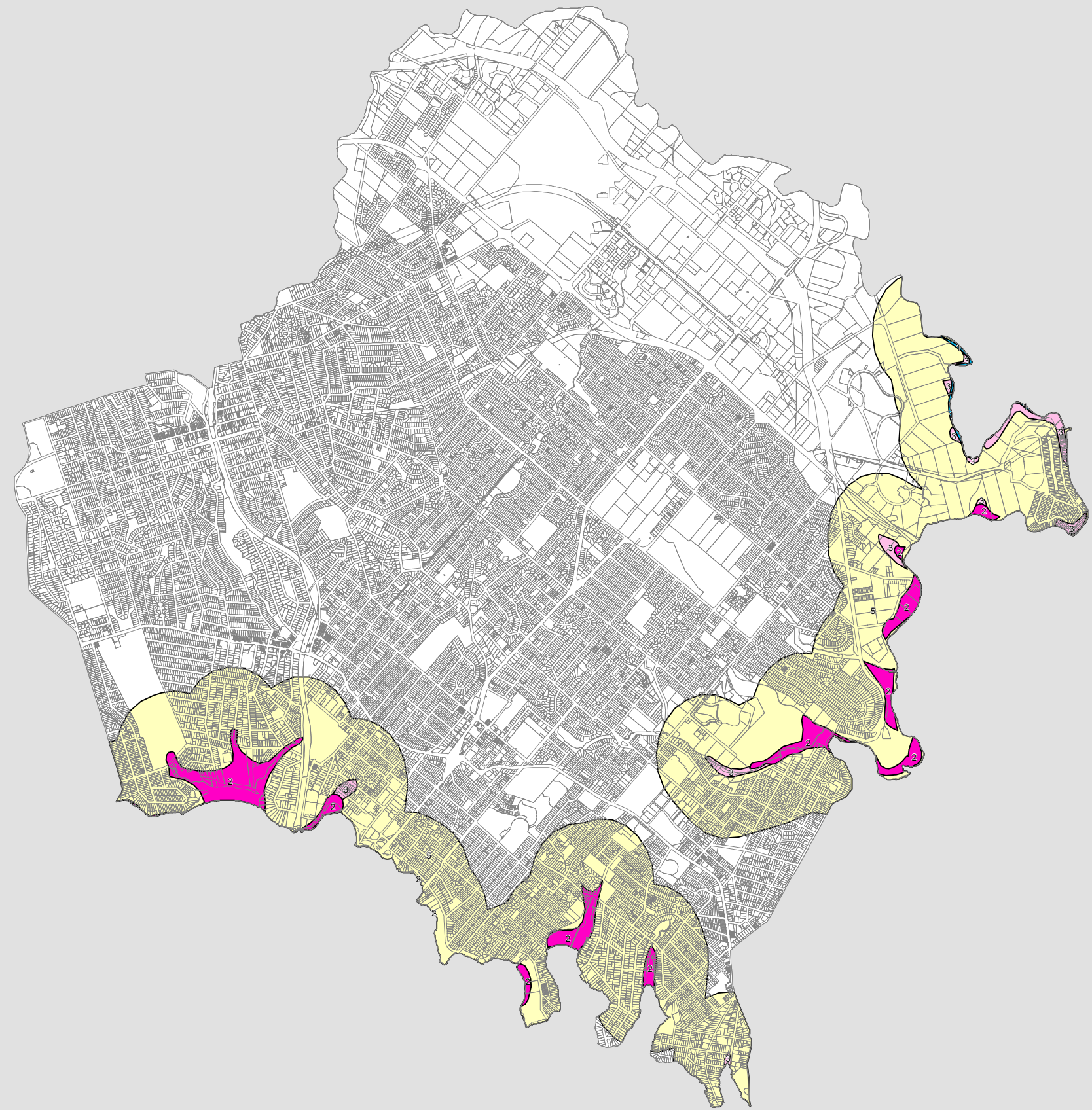
**Acid Sulfate Soils Map -
Sheet ASS_001**

Acid Sulfate Soils

- Class 1
- Class 2
- Class 3
- Class 4
- Class 5

Cadastr

- Cadastr 30/07/2009 © City of Ryde



0 0.5 1 1.5 Km

Scale: 1:40,000 @ A3

Projection: GDA 1994
MGA Zone 56