



# Ryde Local Environmental Plan 2010

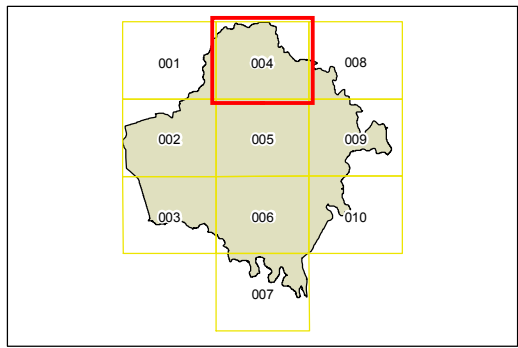
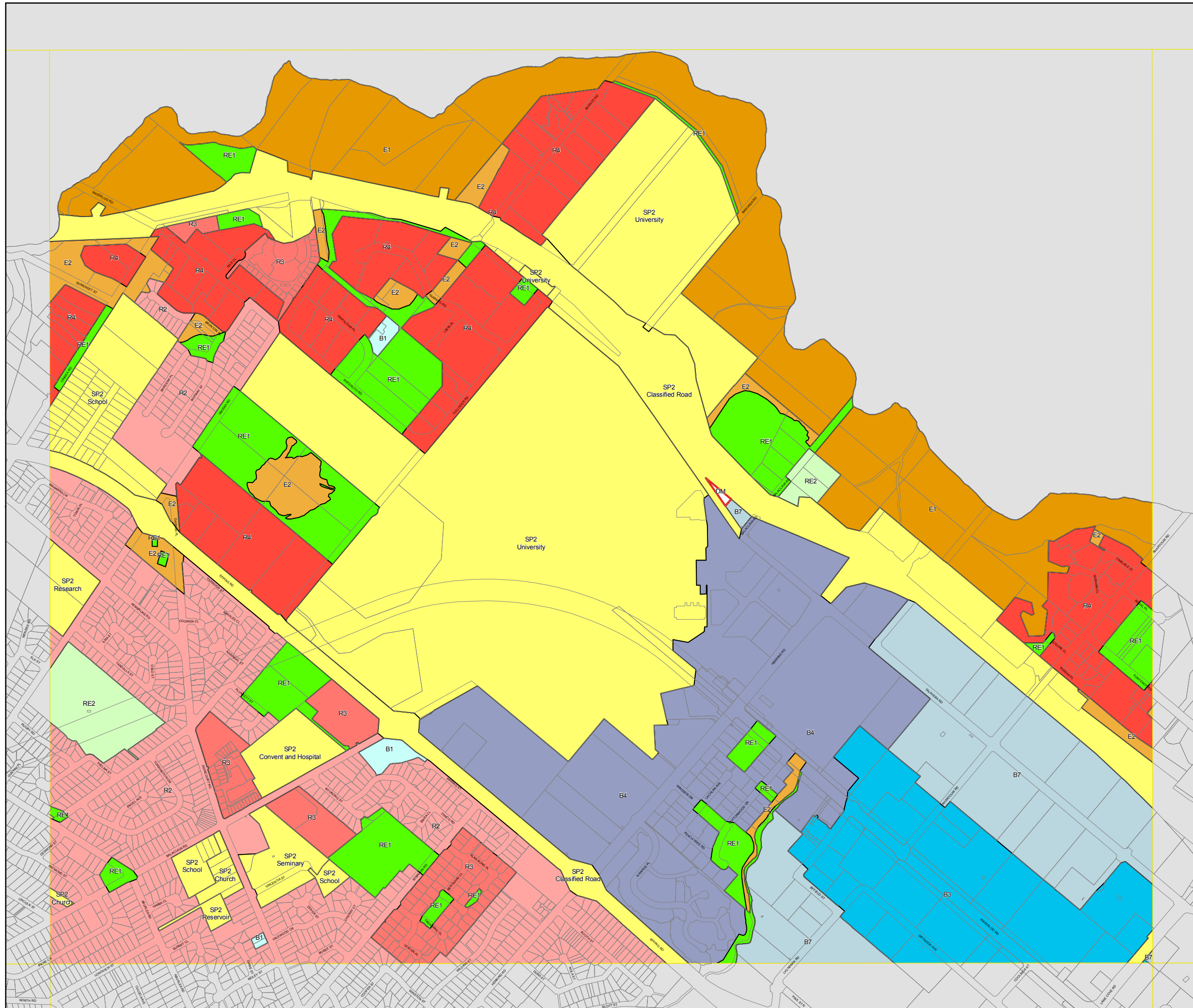
## Land Zoning Map - Sheet LZN\_004

### Zone

- B1 Neighbourhood Centre
- B3 Commercial Core
- B4 Mixed Use
- B5 Business Development
- B7 Business Park
- E1 National Parks and Nature Reserves
- E2 Environmental Conservation
- IN2 Light Industrial
- IN4 Working Waterfront
- R1 General Residential
- R2 Low Density Residential
- R3 Medium Density Residential
- R4 High Density Residential
- RE1 Public Recreation
- RE2 Private Recreation
- SP1 Special Activities
- SP2 Infrastructure
- UL Unzoned Land
- DM Deferred matters

### Cadastre

Cadastre 30/07/2009 © City of Ryde



0 100 200 400m

Projection: MGA Zone 56  
Datum: GDA94  
Scale: 1:10,000 @ A3

Map identification number:  
6700\_CON\_LZN\_004\_010\_20100526