



Ryde Local Environmental Plan 2010

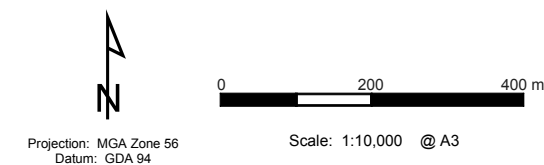
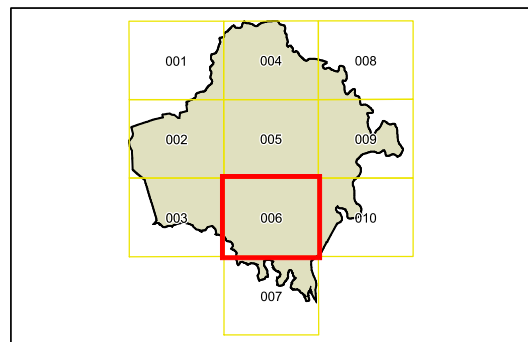
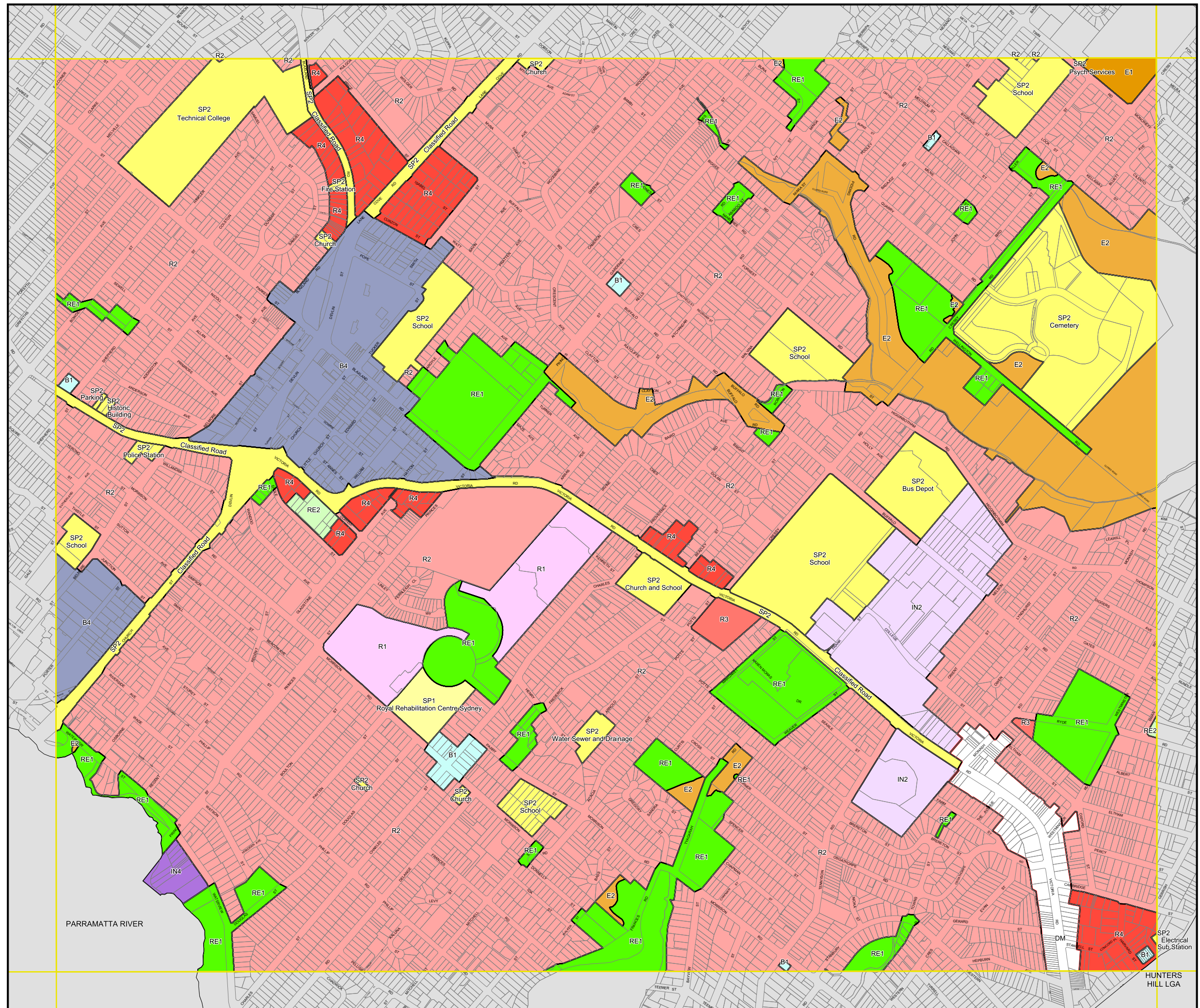
Land Zoning Map - Sheet LZN_006

Zone

- B1** Neighbourhood Centre
- B3** Commercial Core
- B4** Mixed Use
- B5** Business Development
- B7** Business Park
- E1** National Parks and Nature Reserves
- E2** Environmental Conservation
- IN2** Light Industrial
- IN4** Working Waterfront
- R1** General Residential
- R2** Low Density Residential
- R3** Medium Density Residential
- R4** High Density Residential
- RE1** Public Recreation
- RE2** Private Recreation
- SP1** Special Activities
- SP2** Infrastructure
- UL** Unzoned Land
- DM** Deferred Matters

Cadastre

- Cadastre 01/06/2012 © City of Ryde



Projection: MGA Zone 56
Datum: GDA 94
Scale: 1:10,000 @ A3
Map identification number: 6700_CON_LZN_006_010_20120618