

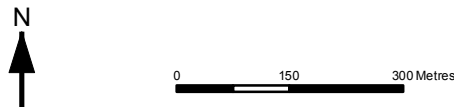
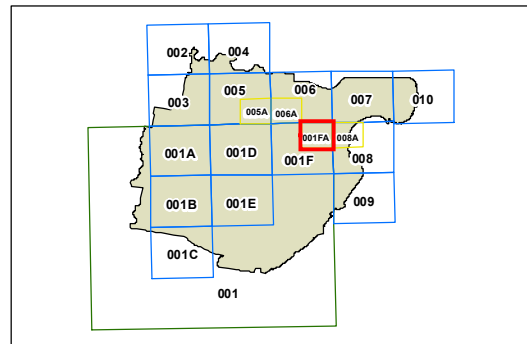


Foreshores of Port Hacking, Georges River, Woronora River and Botany Bay - Sheet FDV_001FA

 Foreshores of Port Hacking, Georges River, Woronora River and Botany Bay

Cadastre
 Cadastre 08/05/2015 © Sutherland Shire Council



Projection: GDA 1994
 MGA Zone 56
 Scale: 1:10,000 @ A3

Map identification number:
 7150_COM_FD_V_001FA_010_20150508