

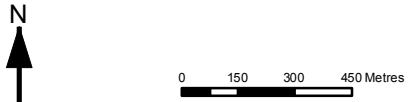
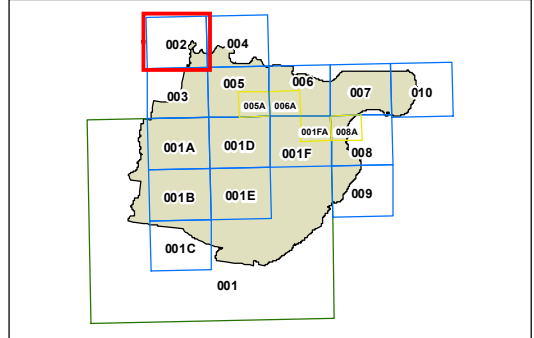


Foreshores of Port Hacking, Georges River, Woronora River and Botany Bay - Sheet FDV_002

 Foreshores of Port Hacking, Georges River, Woronora River and Botany Bay

Cadastral
 Cadastral 08/05/2015 © Sutherland Shire Council



Projection: GDA 1994
 MGA Zone 56
 Scale: 1:20,000 @ A3
 Map identification number:
 7150_COM_FDV_002_020_20150508

