

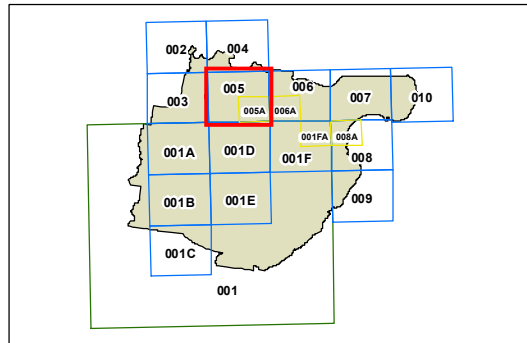
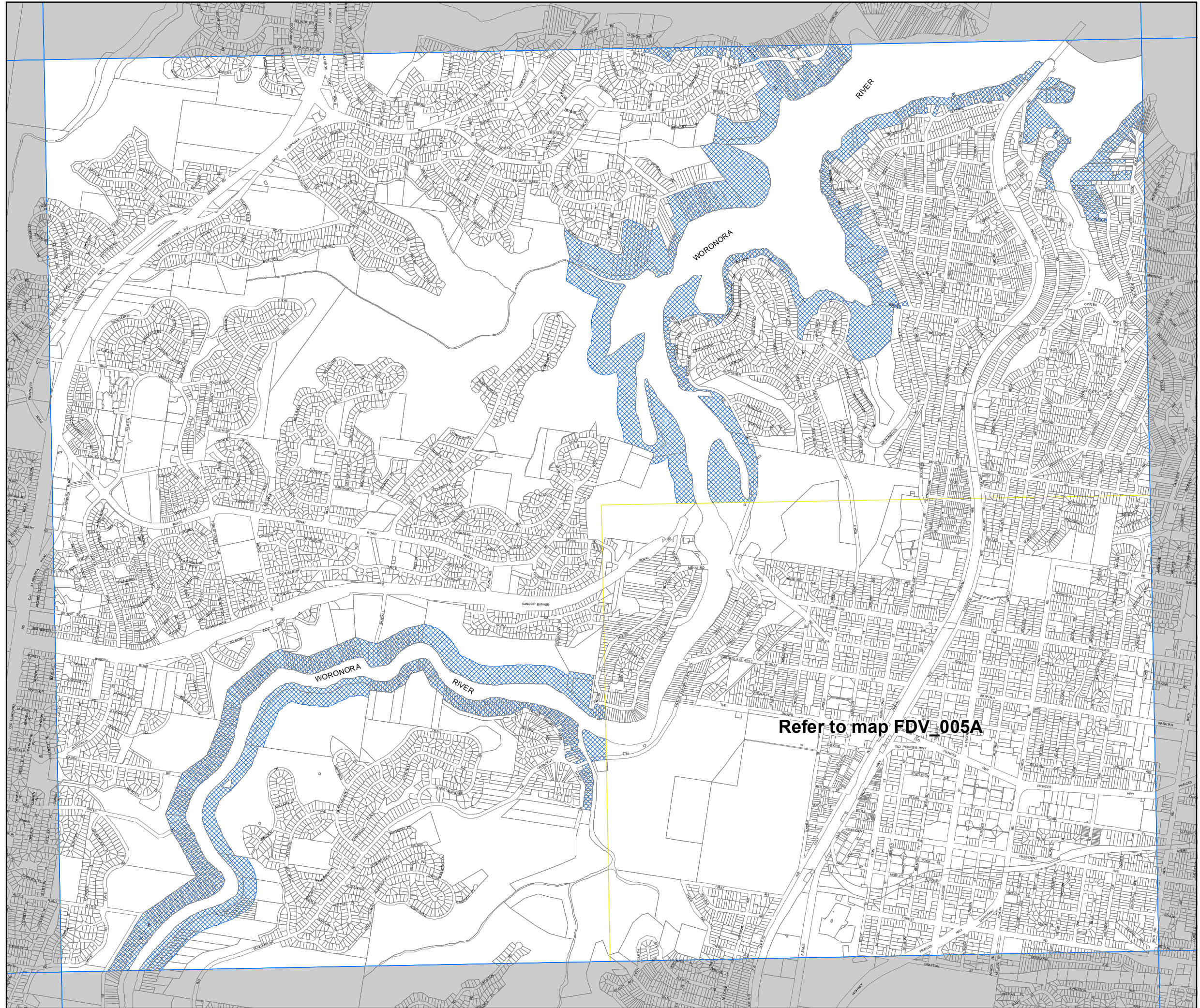


**Sutherland Shire Local Environmental Plan 2015**

Foreshores of Port Hacking, Georges River, Woronora River and Botany Bay - Sheet FDV\_005

Foreshores of Port Hacking, Georges River, Woronora River and Botany Bay

**Cadastre**  
 Cadastre 08/05/2015 © Sutherland Shire Council



0 150 300 450 Metres

Scale: 1:20,000 @ A3

Projection: GDA 1994  
MGA Zone 56

Map identification number:  
7150\_COM\_FDV\_005\_020\_20150508