

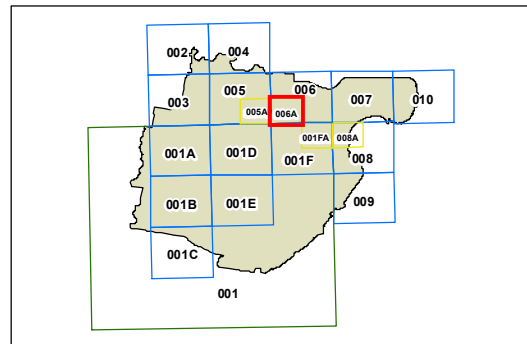


Sutherland Shire Local Environmental Plan 2015

Foreshores of Port Hacking, Georges River, Woronora River and Botany Bay - Sheet FDV_006A

Foreshores of Port Hacking, Georges River, Woronora River and Botany Bay

Cadastral
 Cadastral 08/05/2015 © Sutherland Shire Council



0 150 300 Metres

Projection: GDA 1994
MGA Zone 56

Scale: 1:10,000 @ A3

Map identification number:
7150_COM_FDV_006A_010_20150508