



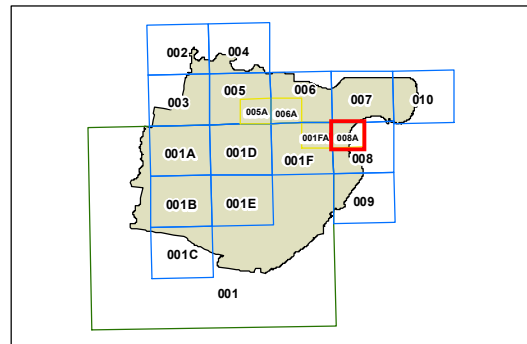
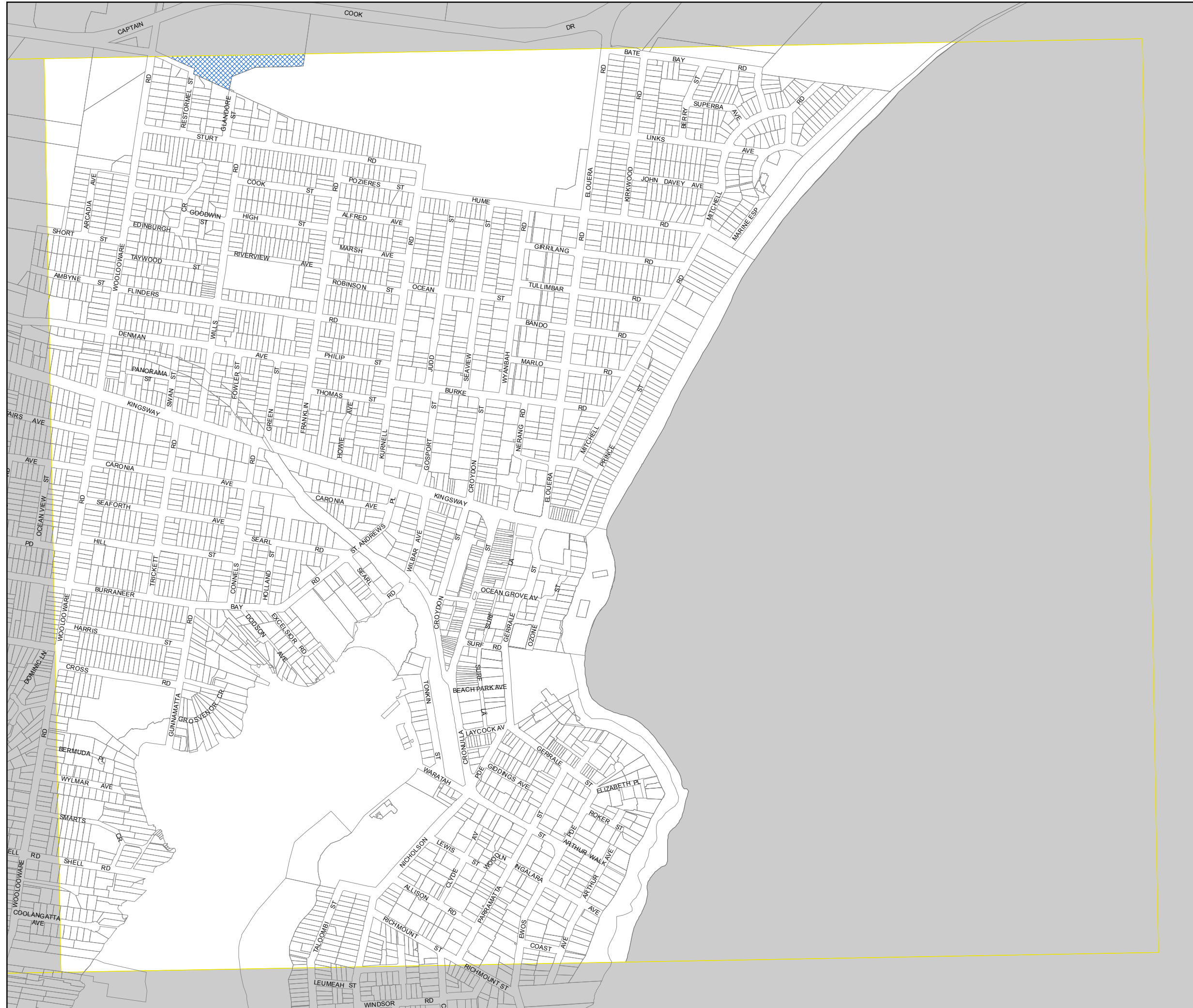


**Sutherland Shire Local Environmental Plan 2015**

Foreshores of Port Hacking, Georges River, Woronora River and Botany Bay - Sheet FDV\_008A

 Foreshores of Port Hacking, Georges River, Woronora River and Botany Bay

**Cadastral**  
 Cadastral 08/05/2015 © Sutherland Shire Council



0 150 300 Metres

Projection: GDA 1994  
MGA Zone 56

Scale: 1:10,000 @ A3

Map identification number:  
7150\_COM\_FDV\_008A\_010\_20150508