



Tamworth Regional Local Environmental Plan 2010

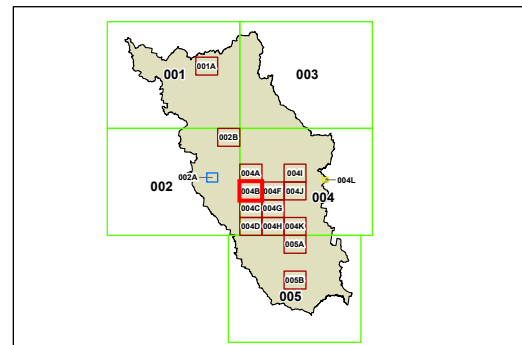
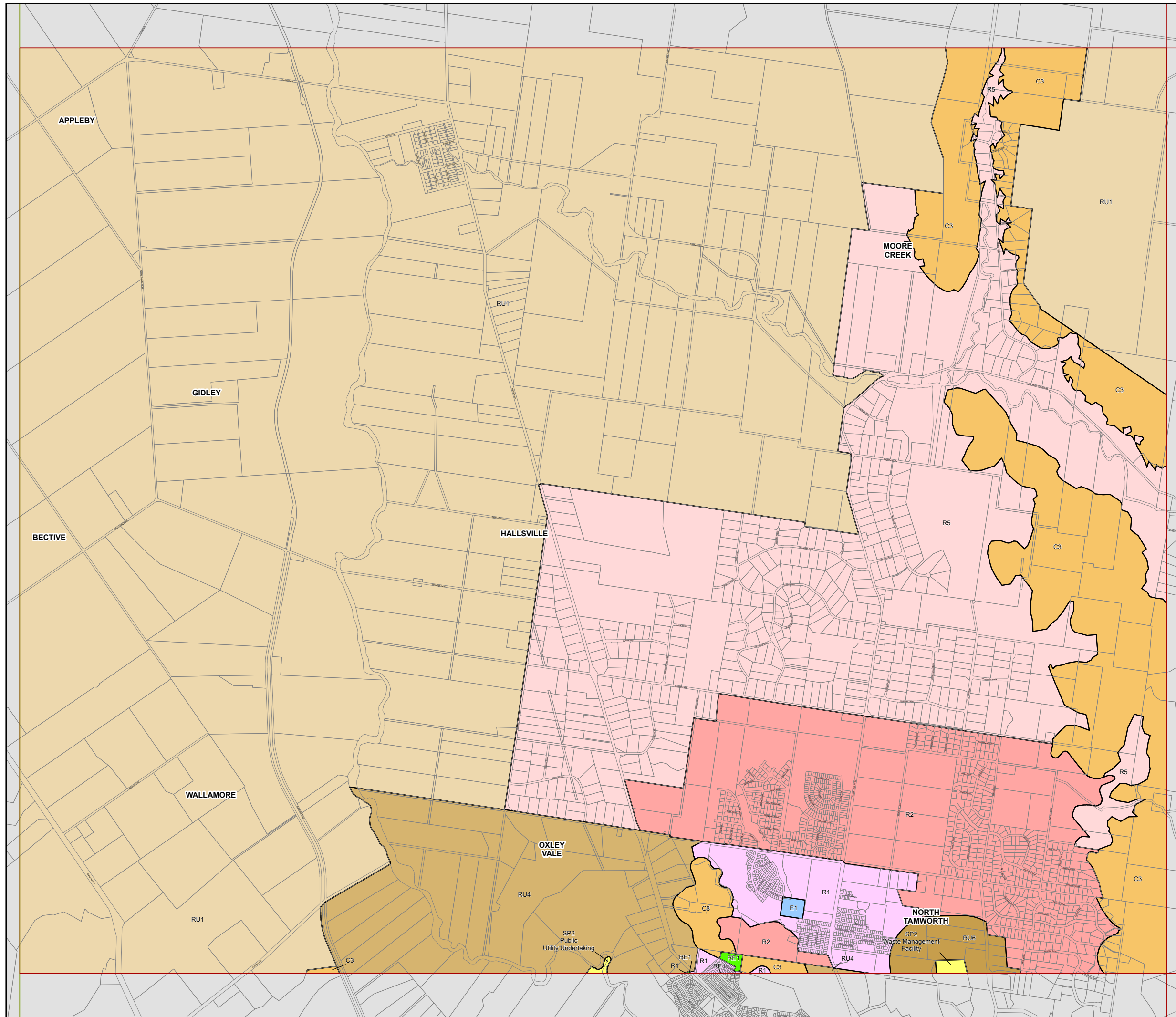
Land Zoning Map - Sheet LZN_004B

Zone

- C1 National Parks and Nature Reserves
- C2 Environmental Conservation
- C3 Environmental Management
- E1 Local Centre
- E2 Commercial Centre
- E3 Productivity Support
- E4 General Industrial
- E5 Heavy Industrial
- MU1 Mixed Use
- R1 General Residential
- R2 Low Density Residential
- R5 Large Lot Residential
- RE1 Public Recreation
- RE2 Private Recreation
- RU1 Primary Production
- RU3 Forestry
- RU4 Primary Production Small Lots
- RU5 Village
- RU6 Transition
- SP1 Special Activities
- SP2 Infrastructure
- SP3 Tourist

Cadastre

Base Data: 24/01/2023 © NSW Spatial Services



0 0.5 1 Km

Projection: GDA 2020
MGA Zone 56

Scale 1:40,000 @ A3

Map Identification Number
7310_COM_LZN_004B_040_20230124