

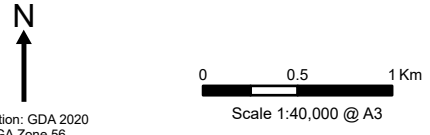
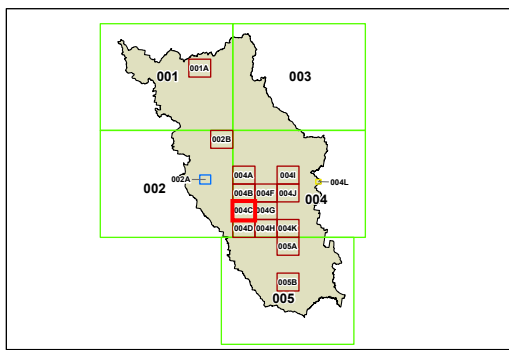
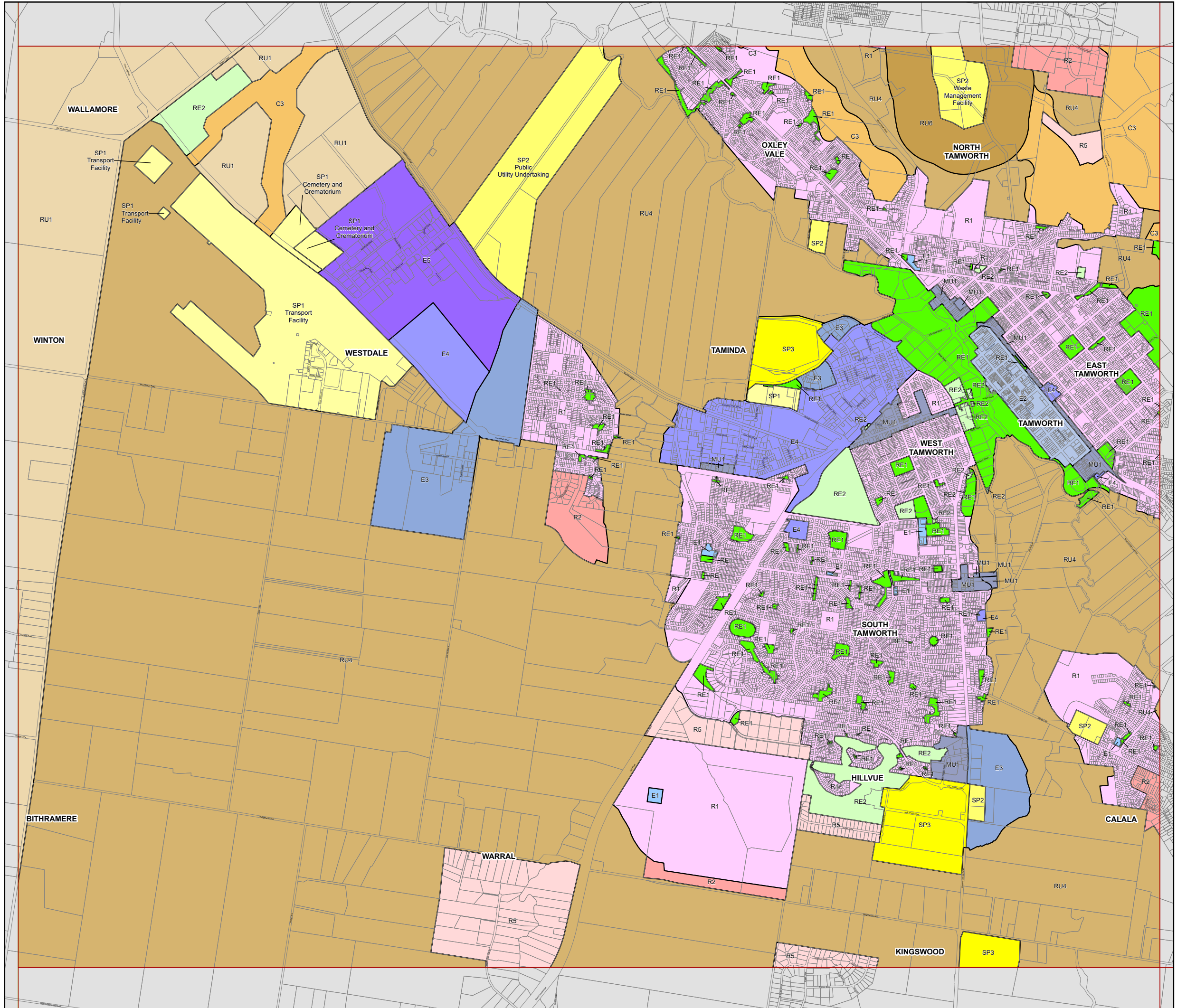


Tamworth Regional Local Environmental Plan 2010

Land Zoning Map - Sheet LZN_004C

- Zone**
- C1 National Parks and Nature Reserves
 - C2 Environmental Conservation
 - C3 Environmental Management
 - E1 Local Centre
 - E2 Commercial Core
 - E3 Productivity Support
 - E4 General Industrial
 - E5 Heavy Industrial
 - MU1 Mixed Use
 - R1 General Residential
 - R2 Low Density Residential
 - R6 Large Lot Residential
 - RE1 Public Recreation
 - RE2 Private Recreation
 - RU1 Primary Production
 - RU3 Forestry
 - RU4 Primary Production Small Lots
 - RU5 Village
 - RU6 Transition
 - SP1 Special Activities
 - SP2 Infrastructure
 - SP3 Tourist

Cadastre
 Base Data: 7/11/2022 © NSW Spatial Services



Projection: GDA 2020
MGA Zone 56
 Scale 1:40,000 @ A3
 Map Identification Number
7310_COM_LZN_004C_040_20221107